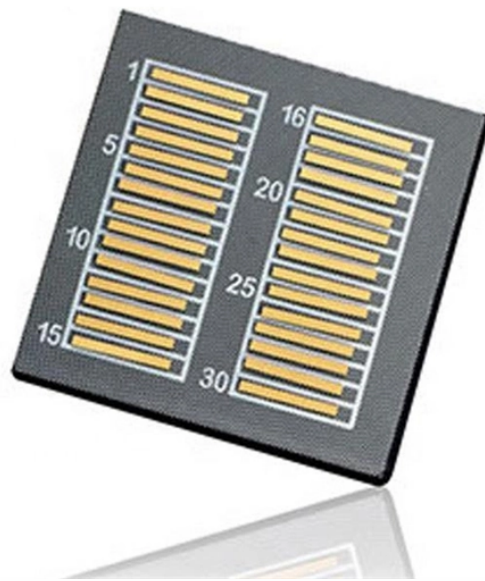
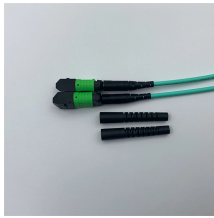


# Working Principle of Polarization Beam Splitter



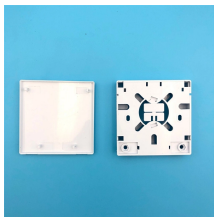
## Working Principle of Polarization Beam Splitter



A beam splitter or beamsplitter is an optical device that splits a beam of light into a transmitted and a reflected beam. It is a crucial part of many optical experimental and measurement systems, such as ...



How Polarizing Beam Splitters Work? PBSs operate based on the polarization properties of light. When an incident beam enters the PBS, the P-polarized component (parallel to the plane of incidence) is ...



A polarization beam splitter (PBS) is a passive optical component that separates light based on its polarization state. This device takes a single beam of light, which may be unpolarized or ...



How Polarizing Beam Splitters Work? PBSs operate based on the polarization properties of light. When an incident beam enters the PBS, the P-polarized ...



Since the dielectric coating is embedded between two prisms, when the incident beam enters the cube, refraction will flatten the rays, reducing the AOI. Cube polarizers generally offer higher transmittance ...



The working principle of a Polarizing beam splitter involves dielectric coatings and the internal structure of the device. Surfaces inside a PBS are coated with thin-film dielectric coatings ...



A PBS (Polarizing Beamsplitter) is an optical device used to split a beam of light into two separate beams with orthogonal polarizations, typically called the "s-polarized" and "p-polarized" beams. It ...



Beam splitters are devices for splitting a laser beam into two or more beams. There are different types, including polarizing and non-polarizing versions.



Polarizing beam splitters, as their name implies, are a kind of beam splitter that divides a single beam of light into two beams of different linear polarizations.



A polarizing beam splitter (PBS) and PBS interferometer (PBSI) can be used to illustrate the superposition principle. In this analysis the quantum math explaining the operation of a PBSI is ...



- A polarizing beam splitter typically consists of a polarizing element, such as a thin film or prism, which selectively transmits light of one polarization and reflects light of the orthogonal ...

## Contact Us

For more information, pricing, or custom solutions, please contact us:

Website: <https://www.indzawo.co.za>

Email: [sales@indzawo.co.za](mailto:sales@indzawo.co.za)

Phone: +27 71 296 8473

Address: 22 Quantum Street, Midrand, 1685, Gauteng, South Africa

This document is for informational purposes only. Specifications subject to change without notice.

