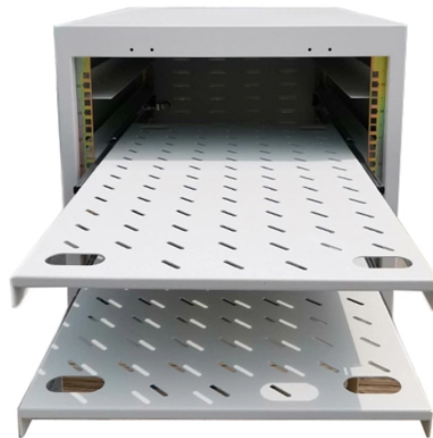


Working Principle of Optical-to-RF Module



Overview

Radio over Fiber (RoF) is a hybrid communication technology that integrates radio frequency (RF) transmission with optical fiber networks. The core principle involves modulating an RF signal onto an optical carrier, transmitting it via fiber, and then recovering the RF signal at the. Working Principle of Optical Module As an essential component of optical fiber communication, optical modules are optoelectronic devices that facilitate the conversion between optical and electrical signals during the transmission process. Operating at the physical layer of the OSI model, optical. At the heart of the module that converts RF signals to light is a laser diode. The optical module is a very important component in an optical communication system.

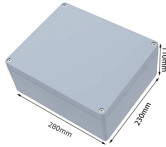
Working Principle of Optical-to-RF Module



RF over Fiber (RFoF) refers to the technology that transmits radio frequency (RF) signals over optical fiber cables. It combines the high-frequency transmission capabilities of RF with the advantages of ...



At the heart of the module that converts RF signals to light is a laser diode. The basic principle is direct modulation of the incoming RF signal onto the output of the laser diode.



Explore the working principles, structures, and performance metrics of optical modules, essential components of optical fiber communication systems. Learn ...



Learn the complete working principle of optical modules (SFP transceivers), including TOSA/ROSA components, laser types, temperature compensation, and more. Weunion's high ...



This device imprints the RF information onto an optical carrier, which then propagates through fiber-optic cable to a remote location. At the destination, a photodetector converts the optical ...



As an important part of fiber-optic communication, an optical module is a photoelectric converter which converts electrical signals into optical signals and vice versa. An optical module works at the physical ...



To truly understand the essence of optical communication, one must start with the working principle of optical modules. This article will systematically explain the working mechanism of optical modules to ...



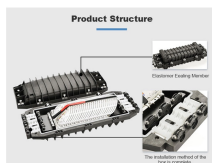
Radio over Fiber (RoF) is a hybrid communication technology that integrates radio frequency (RF) transmission with optical fiber networks. The core principle involves modulating an RF signal onto an ...



It requires no external power or batteries, it uses photoelectric energy from the laser source for power. This small, handy and inexpensive device can be carried by every technician. It presents a fast and ...



This article will focus on the internals of the optical transceiver including the TOSA, ROSA and BOSA, and PCBA. Through this article, you will know the details of the components and ...



This device imprints the RF information onto an optical carrier, which then propagates through fiber-optic cable to a remote location. At the destination, a photodetector converts the optical ...



Explore the working principles, structures, and performance metrics of optical modules, essential components of optical fiber communication systems. Learn about key indicators such as average ...

Contact Us

For more information, pricing, or custom solutions, please contact us:

Website: <https://www.indzawo.co.za>

Email: sales@indzawo.co.za

Phone: +27 71 296 8473

Address: 22 Quantum Street, Midrand, 1685, Gauteng, South Africa

This document is for informational purposes only. Specifications subject to change without notice.

