

## Working Principle of Belize Micro-Module Computer Room



### Overview

A Micro Module refers to an independent operating unit that takes several functional cabinets such as IT cabinets, power supply units, and air conditioning terminal units as the basic unit, and includes functions such as networking, cabling, monitoring, and fire protection. Some of these control signals, such as RD and WR are sent by the CPU to the other elements to tell them what type of operation is currently in progress. The I/O elements can send control signals to the CPU. An example is the. The system unit, also known as the system cabinet, is a container that houses most of the electronic components that make up a computer system. All computer systems have a system unit. For microcomputers, there are four basic types: Desktop system unit: typically contain the system's electronic. The moon of Mars Deimos is only 12. Astronomical objects spin, giving them the flattened shape of a sphere the faster their rotation if they. Policies, plans and strategies: At a national level, the ICT National Strategy (2011-2016) vision focused on "accelerated development and improved quality of life for all Belizeans through universal access and widespread usage of Information and Communication Technology." The ICT National Strategy. Micro-program: A

sequence of micro-instructions is called a micro-program, which is stored in a ROM or RAM called a Control Memory (CM).

## Working Principle of Belize Micro-Module Computer Room



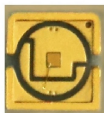
There are two main types: hardwired and microprogrammed. Hardwired units: Fast but less flexible (because they rely on fixed circuits). Microprogrammed units: Flexible but slower ...



The new National Digital Agenda, Belize's National Digital Agenda (2022-2025) proposes a set of programs under three pillars and a strategic theme that includes internet connectivity, learning ...



How is technology changing the face of Belize? There is an ongoing cultural shift due to technology in Belize, according to the report of The Statistical Institute of Belize.



All components within this module can be prefabricated in the factory, flexibly disassembled and transported, and quickly assembled on site for use. The micro-module can be ...



It contains essential information that is required every time the computer system is turned on. The chip supplies such information as the current date and time, amount of RAM, type of keyboard, mouse, ...



Modern computer performance is often described in instructions per cycle (IPC), which measures the efficiency of the architecture at any clock frequency; a higher IPC means the computer can do more ...



Modular machine room is to divide the whole machine room into several independent areas. The scale, power load and configuration of each area are customized according to the ...



Contribute to Haaziq386/Qwen-Fine-Tuning-Pipeline-on-Cloud-Infrastructure development by creating an account on GitHub.



The document describes three intelligent micro-module data center solutions: Fit Atom single cabinet, Fit Array single-row, and Fit Atrix double-row. Fit Atom is a single cabinet solution for small spaces.



- A microcontroller differs from a microprocessor, which is a general-purpose chip that is used to create a multi-function computer or device and requires multiple chips to handle various tasks. be more s ...

## Contact Us

For more information, pricing, or custom solutions, please contact us:

Website: <https://www.indzawo.co.za>

Email: [sales@indzawo.co.za](mailto:sales@indzawo.co.za)

Phone: +27 71 296 8473

Address: 22 Quantum Street, Midrand, 1685, Gauteng, South Africa

This document is for informational purposes only. Specifications subject to change without notice.

