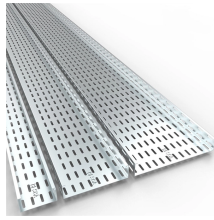


Wiring the air switch in the distribution box



Wiring the air switch in the distribution box



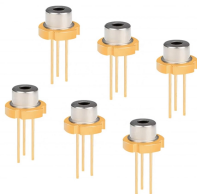
Learn the basics of electrical wiring for the home, including wire and cable types, wire color codes and labeling, and essential wiring techniques.



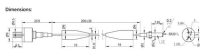
As the air transmitter but-ton is depressed and released, sealed air is displaced and transmitted through the intercon-necting air hose to the pressure sensitive electrical switch, completing the electrical ...



The air circuit breaker, wiring wires, wiring ties, etc. in the box have been prepared and meet the design drawings and the installation requirements of the distribution box.



Wiring Direction: Wiring between the main circuit breaker and each branch circuit breaker in the box generally goes on the left, and the wiring out of the distribution box generally goes on the ...



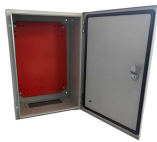
1, the general switch of the household distribution box can generally choose double-pole 32-63A small air switch or isolation switch. 2□Lighting circuits generally use 10-16A small air switches.



Read our guide to electrical wiring, covering layout, materials, safety, and planning for a safe, efficient home system.



This page contains wiring diagrams for household light switches and includes: a switch loop, single-pole switches, light dimmer, and a few choices for wiring an outlet/switch combo device.



This article explains what a distribution box does, typical configurations, sizing guidelines, installation considerations, and maintenance tips to help facility owners and homeowners ...



This unit has two different installation types: Ceiling-suspended type and (2) wall-mounted type. Choose the proper installation pattern according to the location of installation. The installation location for ...



In this video, we'll walk you through the process of wiring a home distribution box with a detailed connection diagram.



When the distribution box is embedded in the wall, it should be vertical and horizontal, leaving 5-6mm gap in the edge. The wiring in the distribution box should be regular and neat, and the ...



It is helpful for every DIY-minded homeowner to have at least a basic understanding of electrical work. This article will attempt to reveal some of the mystery surrounding the maze of wiring ...



The Complete Guide to Electrical Wiring (Current with 2014-2017 Electrical Codes) by Black+Decker



④ The wiring between the main air switch and each branch air switch inside the box usually goes on the left side, while the wiring for power distribution system outgoing lines usually goes on the right side.



When it comes to Electrical Connectors & Wiring Devices, you can count on Grainger. Supplies and solutions for every industry, plus easy ordering, fast delivery and 24/7 customer support.



Electrical wiring is an electrical installation of cabling and associated devices such as switches, distribution boards, sockets, and light fittings in a structure. Wiring is subject to safety standards for ...



Conquer your fear of working with electrical wiring BY understanding the basics of electrical work and installing 3-switch wiring. Play it smart and stay safe when attempting DIY electrical projects. Here's ...



Whether you want to understand how your home's wiring works, add a new light switch, or replace an outlet, learning the basics of electrical wiring is essential for every homeowner. This article covers all ...



Hey, in this article we are going to see the Single Phase Distribution Box Wiring Diagram and Connection Procedure. A distribution board or distribution box is where the main power supply is ...



Get safe, reliable electrical wiring and rewiring services in Des Moines from our licensed and experienced electricians. We handle upgrades, repairs, and new installations for homes and ...

Contact Us

For more information, pricing, or custom solutions, please contact us:

Website: <https://www.indzawo.co.za>

Email: sales@indzawo.co.za

Phone: +27 71 296 8473

Address: 22 Quantum Street, Midrand, 1685, Gauteng, South Africa

This document is for informational purposes only. Specifications subject to change without notice.

