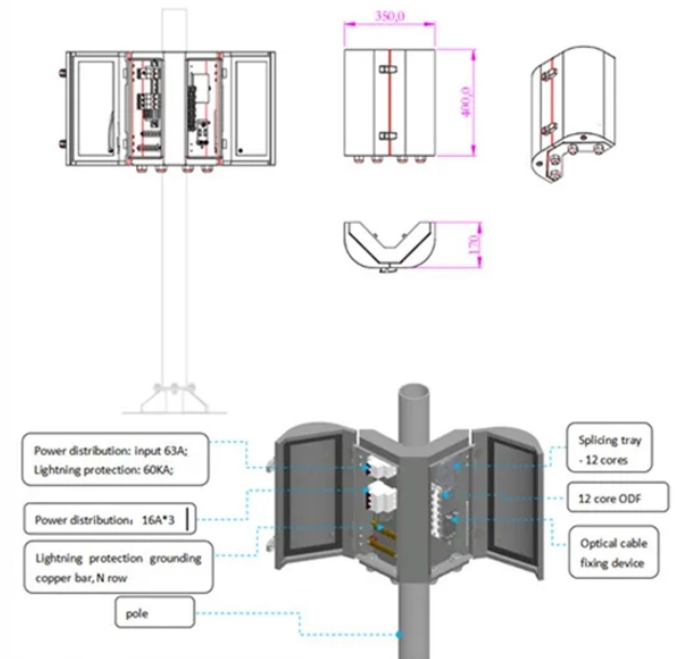


## Wiring the Fiber Optic Switch Communication Module



## Wiring the Fiber Optic Switch Communication Module



Subscribed 119 16K views 1 year ago how to connect fiber cable to switch how to connect fiber module to switch how to use sfp ports on switch...more



Most modern fiber-enabled network switches require an SFP transceiver module featuring a duplex (two strand) multimode OM3 or duplex single mode OS2 connection with LC connectors. Direct attach ...



The network is designed to operate with up to 128 nodes using the Multi-Mode Fiber Optic communication protocol with repeaters in each network module. Each panel to be tied into this ...



This document describes how to troubleshoot fiber optic interfaces by addressing some of the fiber optic module and cabling specifications.



Once the SFP module is securely installed, connect the appropriate cable (fiber optic or copper) to the module. Fiber optic cables should be connected with proper care to avoid damaging ...



Installation guide for Notifier's NCM-W & NCM-F Network Communications Modules. Covers wiring, diagnostics, and mounting.



Figure 4 shows the fiber switch module block wiring diagrams for both Style 7 (Class X) and Style 4 (Class B). Figure 5 shows the wiring for the Fiber Switch connections in Style 7 and Style 4 (Class ...



Use Twisted pair cable to connect Ethernet port with computer and configure the device and computer in the same IP segment, then type the IP address from the website banner in your computer to go into ...



Follow these instructions to install the fiber-optic/RS-232 communications module onto an Eaton or McGraw-Edison CL-6A control or a CL-5 series control. The preferred mounting location for these ...



NCM-W Switch Functions: The NCM-W provides two sets of switches to simplify network setup. Enable ground fault detection by setting "ON" switch SW103 (Channel A); switch SW101 (Channel B).



Install optical modules safely with ESD protection, proper handling, and dust control. Follow these steps to avoid damage and ensure network reliability.



This guide provides site preparation recommendations, step-by-step procedures for rack mounting and desk mounting, inserting modules, and connecting to a power source. CAUTION: To avoid ...

## Contact Us

For more information, pricing, or custom solutions, please contact us:

Website: <https://www.indzawo.co.za>

Email: [sales@indzawo.co.za](mailto:sales@indzawo.co.za)

Phone: +27 71 296 8473

Address: 22 Quantum Street, Midrand, 1685, Gauteng, South Africa

This document is for informational purposes only. Specifications subject to change without notice.

