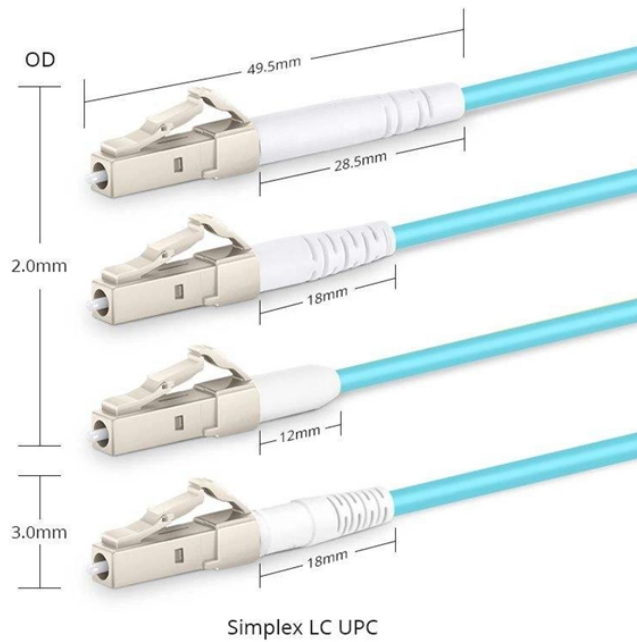


Wiring principle of automatic power-off in distribution boxes



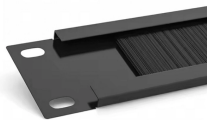
Wiring principle of automatic power-off in distribution boxes



Wiring Direction: Wiring between the main circuit breaker and each branch circuit breaker in the box generally goes on the left, and the wiring out of the distribution box generally goes on the ...



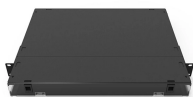
Residual Current Breaker (RCB) works on the assumption that the current going to the electronics device must come out from the neutral wire if there is no other way for current flow. In simple...



The function of the electric power distribution system in a building or an installation site is to receive power at one or more supply points and to deliver it to the lighting loads, motors and all other ...



Master the safest and most efficient circuit breaker wiring configurations. Learn about single-phase vs. three-phase setups, safety standards, and future-proof electrical ...



The following figure shows the principle of the solution utilizing only one power transformer and a single-busbar configuration on the medium-voltage side. The dotted line on the high-voltage side marks for ...



Power is carried through a transmission network of high voltage lines. Usually, these lines run into hundreds of kilometers and deliver the power in to a common power pool called the grid. The grid is ...



Electricity initially comes from the electric meter into the main disconnect switch which allows you to turn off power to the entire house for safety ...



This demand of safety power supply (SPS) is divided between the emergency standby power system (ESPS) and the uninterruptible power supply (UPS). When the NPS fails, the UPS shall be supplied ...



Learn how an electrical bus duct works including power source connection, current distribution, insulation, joints & tap-off points. Discover why bus ducts provide safer, more efficient & ...



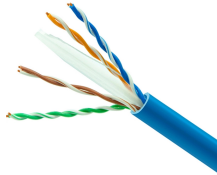
In this video, we'll walk you through the process of wiring a home distribution box with a detailed connection diagram. Whether you're an electrician or a DIY enthusiast, this guide will help you ...



Finally, insert the conductor part of the conductor into the wiring position and press it tightly, but do not press it to the insulation skin and do not expose the conductor;



The project distribution box is an automatic distribution box controlled by a radio frequency remote- control system using a 433MHz transmitter and a 433MHz receiver with a relay ...



Welcome to our channel! In this video, we'll walk you through the process of wiring a home distribution box with a detailed connection diagram.

Contact Us

For more information, pricing, or custom solutions, please contact us:

Website: <https://www.indzawo.co.za>

Email: sales@indzawo.co.za

Phone: +27 71 296 8473

Address: 22 Quantum Street, Midrand, 1685, Gauteng, South Africa

This document is for informational purposes only. Specifications subject to change without notice.

