

Wiring of the three-level power distribution box at the construction site

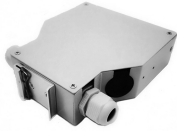


Overview

In this video we are showing a complete Construction Site Electrical Distribution Panel setup. Not only do they keep work moving quickly and efficiently, they ensure worker safety and code compliance. As federal and local regulations regarding jobsite safety evolve. The following instructions and specifications are intended to set forth the general practices and procedures to be followed in connection with customer primary and high voltage installations. These instructions define the areas in which assistance may be given to a primary customer to coordinate. This fact sheet explains how to apply the requirements shown in AS/NZS 3012:2019 Electrical installations – construction and demolition sites (AS/NZS 3012:2019), which is called up as a mandatory standard by section 163 of the Work Health and Safety Regulation 2025 (WHS Regulation). The standard. (1) Power distribution from the primary main distribution board (distribution cabinet) to secondary distribution boards can be branched; that is, one main distribution board may supply power via multiple branch circuits to several secondary distribution

boards. (2) Similarly, power distribution. A distribution box is the heart of any electrical system.

Wiring of the three-level power distribution box at the construction



The three-level distribution system refers to a system that distributes electric power through three levels of distribution devices from the incoming power line at the construction site to ...



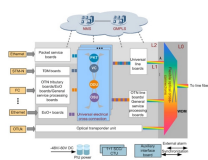
Electrical hazards on construction sites can put workers at risk of injury or death. Learn how to control electrical risks on construction sites, fulfil your legal obligations, and keep yourself and ...



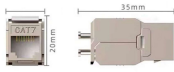
Learn how to install a distribution box safely and correctly. Covers wiring, placement, standards, and expert tips for a compliant setup.



Whether you need an industrial portable power station, a complete jobsite power station, or help managing temporary wiring and distribution, this will help you stay compliant with all the ...



These instructions define the areas in which assistance may be given to a primary customer to coordinate the customer's and DTE Electric systems, to increase the operating safety of high voltage ...



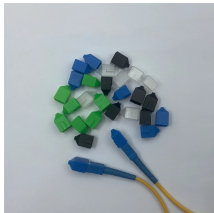
Follow key principles: no cross-level wiring, one machine-one switch, $\leq 30m$ box spacing, dry/ventilated installation for safe distribution.



The references on this page provide information related to electrical in construction including OSHA's electrical construction regulations, hazard recognition, possible solutions and general resources.



In this video we are showing a complete Construction Site Electrical Distribution Panel setup. This includes MCCB, MCB, DB boxes, cable management, earthing and load distribution for...



This fact sheet explains how to apply the requirements shown in AS/NZS 3012:2019 Electrical installations - construction and demolition sites (AS/NZS 3012:2019), which is called up as a ...



Design new primary distribution systems as four wire, multi-grounded systems that are wye connected at the source transformer. Provide a system grounded neutral conductor throughout the system.

Contact Us

For more information, pricing, or custom solutions, please contact us:

Website: <https://www.indzawo.co.za>

Email: sales@indzawo.co.za

Phone: +27 71 296 8473

Address: 22 Quantum Street, Midrand, 1685, Gauteng, South Africa

This document is for informational purposes only. Specifications subject to change without notice.

