

Wiring of Temporary Construction Power Distribution Box



✓ IP65/IP55 OUTDOOR CABINET

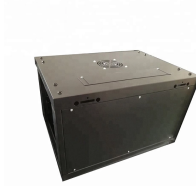
✓ OUTDOOR TELECOM CABINET

✓ OUTDOOR ENERGY STORAGE CABINET

✓ 19 INCH



Wiring of Temporary Construction Power Distribution Box



Have you ever been frustrated by a lack of power available at your job sites? Look no further than this custom designed Temp Power Box to handle all your needs. Including a parts list to ...



Whether you need an industrial portable power station, a complete jobsite power station, or help managing temporary wiring and distribution, this will help you stay compliant with all the ...



Securely manage job site power. Build a compliant temporary distribution box, detailing component sizing, critical grounding, and wiring integrity.



Discover how to supply temporary power safely on construction sites using E-abel distribution boxes, industrial plug sockets, and IP67 connectors for reliable outdoor electricity.



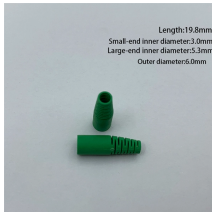
Power lines are constant hazards in a construction area. If a power line must be protected or moved, contact utility company before interfering with the construction process or equipment. Where this is not ...



Explore Hubbell Wiring Device-Kellems' spider boxes, built to provide reliable and versatile temporary power solutions in demanding environments like construction sites and outdoor events.



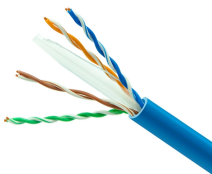
This article explains how temporary construction power boxes work, the key components involved, and how E-abel portable electrical enclosures combined with industrial connector systems ...



Learn how to wire a temporary power pole with a detailed wiring diagram for easy installation and setup.



Learn about the layout and components of a temporary power pole, including wiring, safety features, and installation guidelines for temporary power supply setups.



A: All temporary power units are fed via a male inlet on the side of the enclosure, or a male plug mounted on a tail. Therefore, a connection tail should have a female device.



The provisions of paragraph (a) (2) of this section apply to temporary electrical power and lighting wiring methods which may be of a class less than would be required for a permanent installation.

Contact Us

For more information, pricing, or custom solutions, please contact us:

Website: <https://www.indzawo.co.za>

Email: sales@indzawo.co.za

Phone: +27 71 296 8473

Address: 22 Quantum Street, Midrand, 1685, Gauteng, South Africa

This document is for informational purposes only. Specifications subject to change without notice.

