

Wiring of 380 in the distribution box



Overview

This video shows real on-site footage of electrical installation, demonstrating safe and standardized wiring methods used by professionals. The term “four wires” refers to three live wires and one neutral wire, designated as A|B|C|N|, with N representing the ground wire. The three live wires should be connected to the upper entry of the main switch in the explosion-proof distribution box, and the neutral wire should be directly. Main parts of the electrical system device and checks ONTROL PANEL “PC380- ” Descriptions Main visualizations Functions Users's setting DISTRIBUTION BOX “DS520-AN” Protection fuses Connections Electrical system functions INSTALLATION “PC380- ”. A distribution board or distribution box is where the main power supply is distributed to multiple loads. Failure to strictly adhere to the warnings and cautions as well as the installation instructions may result in serious personal. An electrical panel box, also known as a breaker box or a distribution board, is a crucial component of any electrical system.

Wiring of 380 in the distribution box



The term “four wires” refers to three live wires and one neutral wire, designated as A|B|C|N|, with N representing the ground wire. The three live wires should be connected to the upper ...



This experiment focuses on the wiring and installation of a distribution box (DB), aiming to equip students with practical skills in creating wiring diagrams and performing installations. Students utilize ...



Learn how to wire a distribution box step by step! This video shows real on-site footage of electrical installation, demonstrating safe and standardized wiring methods used by professionals.



The document outlines the electrical distribution system for a facility, detailing protective equipment specifications, cable types, and routing for various distribution boards.



Please note that the 380-415 Volt Power Distribution System is the same as the “Y” connection shown in OPTION A except for the voltage levels and the use of the MP/N to develop the 240 volt from the 380 ...



To route the AC cable into the Distribution Box, insert the cable through the bottom left grommets on the backside of the Distribution Box. Pull the cable through until any slack is removed.



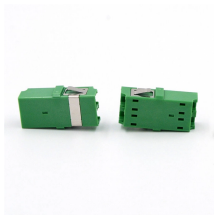
Hey, in this article we are going to see the Single Phase Distribution Box Wiring Diagram and Connection Procedure. A distribution board or distribution box is where the main power supply is ...



MAIN PARTS OF THE ELECTRICAL SYSTEM > CONTROL PANEL "PC380-KT" - mains" control, battery test, tank test and clock function. > 12V DISTRIBUTION BOX "DS 520-AN " - main relays, ...



Wiring Direction: Wiring between the main circuit breaker and each branch circuit breaker in the box generally goes on the left, and the wiring out of the distribution box generally goes on the ...



This experiment focuses on the wiring and installation of a distribution box (DB), aiming to equip students with practical skills in creating wiring diagrams and ...



Find out how to properly wire an electrical panel box with a comprehensive diagram and step-by-step instructions.

Contact Us

For more information, pricing, or custom solutions, please contact us:

Website: <https://www.indzawo.co.za>

Email: sales@indzawo.co.za

Phone: +27 71 296 8473

Address: 22 Quantum Street, Midrand, 1685, Gauteng, South Africa

This document is for informational purposes only. Specifications subject to change without notice.

