

Winter Outdoor Fiber Optic Cable Splicing



Winter Outdoor Fiber Optic Cable Splicing



Starfighter 4048-D Outdoor Dome Splice Closure
The Multilink Starfighter 4048D Fiber Optic Dome Splice Closure is an “all parts” inclusive hermetically sealed splice enclosure designed for ease of ...



Empty box design, specially designed to store and protect fiber optic adapters for daily network management. Compact size: 6.3 × 1.77 × 0.67 inches, suitable for indoor and outdoor narrow ...



Winter, the coldest season of the year, comes between autumn and spring. It is associated with plunging temperatures and icy weather, but its impact and timing change according to location.



The seasons have their names for a reason; they describe the weather common for that time of year. Here's why the coldest season is called "winter."



In outdoor installations, protecting fiber optic connections is paramount to ensure reliable and durable networks. Weatherproof optic splice closures play a crucial role in safeguarding these ...



The meaning of WINTER is the season between autumn and spring comprising in the northern hemisphere usually the months of December, January, and February or as reckoned astronomically ...



Winter, coldest season of the year, between autumn and spring; the name comes from an old Germanic word that means "time of water" and refers to the rain and snow of winter in middle and ...



Ribbon cables offer higher fiber counts and greater fiber density than any other outdoor cable in Corning's portfolio and enable mass fusion splicing for faster cable installation and restoration.



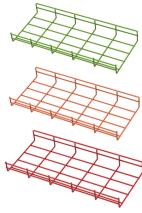
The start of winter, and the shortest day of the year. What Causes Seasons? Thank the Earth's tilted axis.



AFL offers robust fiber optic splice closures—including Apex® high-density and LightGuard® weathertight and sealed models—for above-ground, aerial, and buried applications.



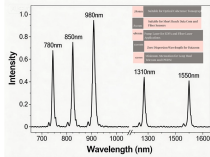
The mechanical sealing structure ensures a strong and reasonable design that can be opened and reused after sealing. With reliable water and ...



Winter - Winter Solstice Winter has the coldest weather of the four seasons as the days become shorter and colder with snow dropping in the coldest areas. In the Northern Hemisphere winter comes in the ...



Organize and protect your fiber optic connections with our outdoor closure splice tray. Designed for various fiber counts, this tray ensures efficient and reliable network performance.



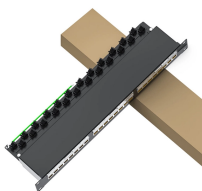
The winter solstice marks the official beginning of astronomical winter (as opposed to meteorological winter, which starts about 3 weeks before the solstice). It occurs once a year in each hemisphere: ...



Cold weather can cause issues with fiber optic cables and affect your connection. Learn what problems can happen and simple ways to prevent or fix them.



Gel Dome Enclosures Starfighter Optical Gel Fiber Closures are an “all parts” inclusive hermetically sealed splice enclosures designed for ease of assembly and re-entry. The closures are designed ...



An Outdoor Fiber Enclosure is a critical component in modern fiber optic networks used to protect, manage, and distribute fiber connections in FTTH, FTTx, and outdoor OSP environments. ...



The four seasons of the year in the United States — spring, summer, fall, and winter — are what determine the weather, the ecosystem, and the hours of daylight throughout the year.



Fiber Optic Wall Mount or Pole Mount Enclosure for Indoor or Outdoor Fiber Optic Terminations and Fusion Splice installations with Couplers. (LC APC NO Pigtailed)



Winter is one of the four Earth's seasons, that goes after autumn and foreshadows spring. This season is the coldest in the whole year, but not in the tropical zones.



This aerial weather tight fiber optic splice closure is for small to medium counts up to 72 fiber (or 288 ribbon fiber). Splice trays are available for single, mass or mechanical splicing.



Ensure reliable networks in extreme weather with fiber optic splice enclosures. Learn about materials, weatherproof ratings, and installation tips for durability.



Winter is often defined by meteorologists to be the three calendar months with the lowest average temperatures. This corresponds to the months of December, January and February in the Northern ...

Contact Us

For more information, pricing, or custom solutions, please contact us:

Website: <https://www.indzawo.co.za>

Email: sales@indzawo.co.za

Phone: +27 71 296 8473

Address: 22 Quantum Street, Midrand, 1685, Gauteng, South Africa

This document is for informational purposes only. Specifications subject to change without notice.

