

## Widest width for installing distribution boxes



## Widest width for installing distribution boxes



The latest NEC updates prioritize adaptive solutions for modern energy demands. With homes now packing solar arrays, EV chargers, and smart-home systems, distribution boxes work harder than ...



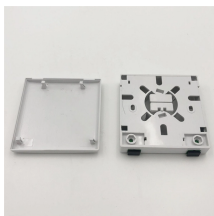
For low-power gear, terminals, and splicing, compact plastic or FRP boxes offer a lightweight, cost-effective solution. Typical dimensions range from ...



How many conductors are allowed is determined by the size of the box and the size of the conductors. Each conductor that terminates or is spliced within the box is counted once, and each conductor that ...



The rule states the width must be the greater of either 762 mm (30 inches) or the width of the equipment itself. This ensures that a worker can stand comfortably in front of the entire piece of equipment and ...



Large electrical power distribution boxes come in several sizes—single-gang for one device, double-gang for two, and so on. Check out this quick guide: Think about how many devices ...



NEC® Reference stallation and use of boxes. The article includes table references that guide the electrician in the selection of the proper box size necessary to safely accommodate ele trical service ...



This guide explains standard electrical box dimensions by type, compares common sizes, and helps you select the right box for residential, commercial, and light industrial applications.



Explore standard panel sizes, applications, and key differences for residential, commercial, and industrial use.



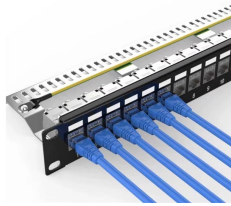
In this guide, we'll break down everything you need to know to install a distribution box correctly and confidently. Choose the right box based on environment (indoor/outdoor), load ...



Complete specification guide for outdoor electrical distribution boxes covering NEC Article 312 requirements, NEMA ratings, sizing calculations, and selection criteria for commercial and ...



For low-power gear, terminals, and splicing, compact plastic or FRP boxes offer a lightweight, cost-effective solution. Typical dimensions range from hand-sized units up to around the ...



Introduction Understanding The Components of A Distribution Box Selecting The Right Distribution Box Site Preparation and Location Requirements Electrical Connections and Wiring Compliance with Standards and Regulations Conclusion What Is a Distribution Box? A distribution box, also known as a power distribution unit, is a critical component in any electrical system. It is the control center for electricity in your home or business. It takes the electrical power coming into the building and distributes it to different circuits. Each circuit then powers various device... Why Proper Installation Matters Installing a distribution box correctly is about more than just making sure the lights turn on. It's about safety, efficiency, and reliability. A poorly installed distribution box can lead to a host of problems. These include electrical fires, short circuits, and even complete power failures. Proper installation ensures tha... See more on eabel  
Published: Feb 7, 2025. `.sb_doct_txt{color:#4007a2;font-size:11px;line-height:21px;margin-right:3px;vertical-align:super}.b_dark`  
`.sb_doct_txt{color:#82c7ff}`homedepot-static

## Contact Us

For more information, pricing, or custom solutions, please contact us:

Website: <https://www.indzawo.co.za>

Email: [sales@indzawo.co.za](mailto:sales@indzawo.co.za)

Phone: +27 71 296 8473

Address: 22 Quantum Street, Midrand, 1685, Gauteng, South Africa

This document is for informational purposes only. Specifications subject to change without notice.

