

## Why isn't the router plugged in with an optical fiber cable



### Overview

The fiber optic cable does not plug directly into a standard home router because the signal type must be translated. The fiber line terminates at the Optical Network Terminal (ONT), which is typically supplied and installed by the internet service provider. This specialized equipment serves as the. The process to connect fiber optic cable to router requires careful attention to detail, but I'll walk you through every critical step with the precision and clarity you deserve. Fibre optic broadband. An Ethernet cable running from the fiber terminal should be plugged into the LAN/WAN port on the back of the C4000XG. If the status light ring is off (no color), it means your router is not connected to the network. Here's a simple guide to help you through the process: 1.

## Why isn't the router plugged in with an optical fiber cable



Don't let optical network terminal (ONT) problems disrupt your fiber-optic experience. At BroadbandSearch, we developed this guide to help you avoid unnecessary service calls and prevent ...



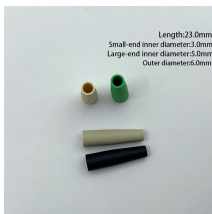
Connecting a fiber optic cable to a router involves a few key steps and specialized equipment. Here's a simple guide to help you through the process: 1. Check Your Fiber Optic ...



Connecting a fiber optic cable to a router might seem daunting at first, but with the right tools and a bit of patience, it's a straightforward process. Here's a step-by-step guide to help you through it.



No, you typically cannot plug a raw fiber optic cable directly into a standard wireless router. Most consumer-grade routers do not have a built-in fiber port (SFP module or optical interface).



The fiber optic cable does not plug directly into a standard home router because the signal type must be translated. The fiber line terminates at the Optical Network Terminal (ONT), ...



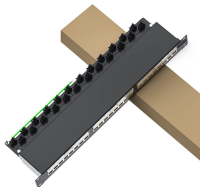
Q: Why is my router not detecting the fiber connection? A: Ensure all cables are securely connected, the ONT is powered on, and your ISP has activated the service.



Despite multiple attempts, the Archer AX6000 v1.0 is unable to connect to the modem. The blue light on top of the router spins around for a few minutes as it tries to negotiate a connection ...



Once connected, the status light on the front of the modem will be solid green. If the status light ring is off (no color), it means your router is not connected to the network. The most common causes of this ...



Your fiber internet connection, which runs from the main network to your property over fiber-optic cable, does not provide its own power, and can't be hooked up directly to your personal equipment.



By following this detailed guide, you've not only learned how to connect fiber optic cable to router properly but also how to optimize and maintain that connection for peak performance.

## Contact Us

For more information, pricing, or custom solutions, please contact us:

Website: <https://www.indzawo.co.za>

Email: [sales@indzawo.co.za](mailto:sales@indzawo.co.za)

Phone: +27 71 296 8473

Address: 22 Quantum Street, Midrand, 1685, Gauteng, South Africa

This document is for informational purposes only. Specifications subject to change without notice.

