

# Which is better for cold-joint splices vertical or horizontal insertion



## Overview

It was found that cold joints generally reduced the flexural strength of beams, with the extent of the reduction varying depending on the joint's location, orientation, and the time between pours. Cold joints, which form when concrete is poured in stages rather than continuously, are often seen as weaknesses that can compromise the strength and durability of concrete structures. 4, 6, 8, or 10 inch) for the building inspector and installer. Each cross section should show the wall heights involved for every storey. Vertical and horizontal reinforcing steel bar sizes, spacing and grade of steel should be. Mechanical splices use a coupler or sleeve to join two pieces of reinforcement and create a continuous connection that transfers forces and is ultimately stronger than the reinforcement bars it joins. Mechanical couplers may be grout-filled, steel-filled, threaded, use shear bolts, use swaging (a.

## Which is better for cold-joint splices vertical or horizontal insertion



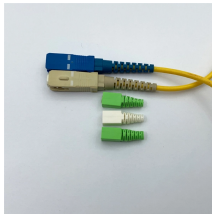
A: The easiest way to identify a cold joints in concrete columns is by observing a distinct horizontal line or seam on the concrete surface, often marked by a slight change in color, texture, or ...



Better is an adjective that describes something as being superior or is an adverb that means something is done to a higher degree or more completely. As a verb, better means to improve.



Shouldn't really be a problem if you leave a roughened concrete surface and have shear steel projecting through the interface. Ask the price for a cold joint bulkhead between the slab and ...



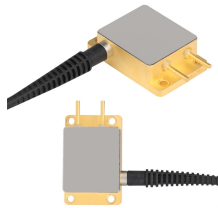
To be better off, to be in superior circumstances; To be better than one's self, to do more than one had promised; To get the better of, to gain the advantage over.



improve, better, help, ameliorate mean to make more acceptable or to bring nearer a standard. improve and better are general and interchangeable and apply to what can be made better whether it is good ...



The vertical joint with different rebar lap splices differs from the scenario with continuous reinforcement cutting through the joint, resulting in a complex force transfer path.



Vertical reinforcement bars are slid into place from the top and weaved into the horizontal reinforcement and secured into the proper place according to the project plans and specs. Most walls ...



Grout-filled mechanical splices are widely used in applications including horizontal and vertical connections in cast-in-place, tilt-up, and precast concrete construction. These systems are ...



The influence of cold joint orientation (vertical, horizontal, or angled) on crack formation, failure mechanisms and mechanical behavior was examined. Microstructural analysis was employed ...



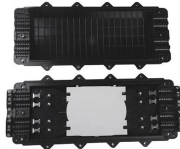
For lap splices, contact splices are preferred for the practical reason that, when wired together, they are more easily secured against displacement during concrete placement. Non-contact lap spliced bars ...



Benefits and shortcomings of each method are mentioned and recommendations for better performance of splices are made. Bar splice methods have always been studied and ...



1. To make better; improve: trying to better conditions in the prison; bettered myself by changing jobs. 2. To surpass or exceed: practiced so he could better his rival.



Cold joints, which form when concrete is poured in stages rather than continuously, are often seen as weaknesses that can compromise the strength and durability of concrete structures.



In this study, unidirectional loading tests have been performed for horizontal joints of UHPC prefabricated shear walls with vertical bars splicing by cold-extrusion sleeves and a method to ...



BETTER definition: 1. comparative of good: of a higher standard, or more suitable, pleasing, or effective than other.... Learn more.



Splicing is an important part of custom cable assembly, and there are several methods for going about it. Each is different, and understanding their pros and ...



I started to get concerned about horizontal forces in those bolts as I wasn't sure if there is combined influence in bolt shear both perpendicular and ...



Better is used to form the comparative of compound adjectives beginning with "good" and "well."



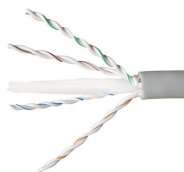
better (third-person singular simple present betters, present participle bettering, simple past and past participle bettered) This government will better our society. (intransitive) To become ...



In this paper, the problem of the generation of cold joints is approached from two complementary perspectives.



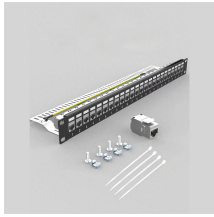
Definition of better adjective in Oxford Advanced American Dictionary. Meaning, pronunciation, picture, example sentences, grammar, usage notes, synonyms and more.



When a project has more than one storey of walls, it is necessary for the installer to understand how to perform vertical reinforcement lap splices between the different pours. There are two options, both of ...



Better Mortgage Corporation is a direct lender dedicated to providing a fast, transparent digital mortgage experience backed by superior customer support.



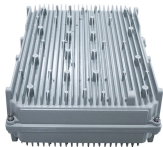
Better definition: Greater in excellence or higher in quality.



The connection of the prefabricated shear wall structure includes a horizontal joint and vertical connection. Compared to vertical connections, the horizontal joint is more important, because ...



LOGIX ICFs. The LOGIX web ties, which are spaced horizontally every 8" (203mm) and about 5.25" vertically provide stability for placement of vertical rebar. Vertical ties secured horizontal rebar. the webs have ...



For me usually mechanical butt splice with rubber tape. The Polaris type connectors are super nice, but they are spendy enough that often I find the ...

## Contact Us

For more information, pricing, or custom solutions, please contact us:

Website: <https://www.indzawo.co.za>

Email: [sales@indzawo.co.za](mailto:sales@indzawo.co.za)

Phone: +27 71 296 8473

Address: 22 Quantum Street, Midrand, 1685, Gauteng, South Africa

This document is for informational purposes only. Specifications subject to change without notice.

