

Which circuits in the distribution box are most useful



Overview

This ultimate guide explains what a distribution box does, its internal components, common types, real-world applications, and how to select the right DB Box for your project. The building's electrical power enters through the main feeding cable, which connects to the distribution board. It includes isolator, RCCB (Residual current circuit breaker) or RCD (Residual-current device) devices, protective fuses or MCB's (Miniature Circuit Breaker). A distribution board, or db box, is like the heart of your electrical system. Simply put. It ensures that circuits are safe, organized, and easy to manage.



Which circuits in the distribution box are most useful



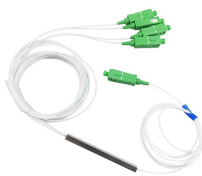
Inside, it houses circuit breakers or fuses, which automatically cut off electricity in case of an overload or short circuit. This prevents damage to appliances and reduces fire hazards.



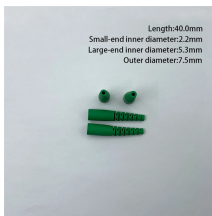
A distribution box is an enclosure that houses circuit breakers, fuses, and other protective devices. Its primary function is to distribute incoming electrical power into subsidiary circuits while ...



Inside a distribution box are components like circuit breakers, earth leakage units, doorbells, and timers. The building's electrical power enters through the main feeding cable, which ...



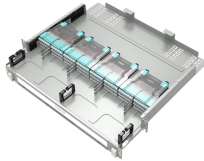
Distribution Board or DB is an electricity supply system or a common enclosure that distributes the electrical power feed into subcircuits. It includes isolator, RCCB (Residual current ...



A distribution board sends electricity to different circuits in your home or workplace. It keeps your system safe by stopping overloads, short circuits, and other problems.



Inside, it houses circuit breakers or fuses, which automatically cut off electricity in case of an overload or short circuit. This prevents damage to ...



Distribution boards may be designated for three phase or single phase and normal power or emergency power, or designated by use such as distribution panels for supplying other panels, lighting panels for ...



Understanding its significance, this article covers what a distribution box is, how it functions, its structure, the various types available, and how it differs from other electrical boxes like ...



What Does a Distribution Box Do? A Distribution Box, commonly known as a DB Box, serves as the central point for safely distributing electrical power from a main supply to multiple downstream ...



But what is the distribution board in technical terms? It's an assembly of protective devices (like circuit breakers or fuses), switching devices, and busbars, all enclosed within a robust housing. ...



Distribution boxes are equipped with circuit breakers or fuses that protect individual circuits from overcurrent, short circuits, or ground faults. When an abnormal current is detected, the ...

Contact Us

For more information, pricing, or custom solutions, please contact us:

Website: <https://www.indzawo.co.za>

Email: sales@indzawo.co.za

Phone: +27 71 296 8473

Address: 22 Quantum Street, Midrand, 1685, Gauteng, South Africa

This document is for informational purposes only. Specifications subject to change without notice.

