

What types of tees are available for cable trays



Overview

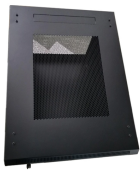
Equal tees, unequal tees and crossovers are available for light, medium and heavy duty cable tray systems with widths ranging from 50mm – 900mm. Vertical bend, horizontal bend, cross and horizontal tee. Our Perforated Type Cable Trays are used extensively in Buildings. This article provides a comprehensive guide on the different types of cable tray accessories, their uses, and their importance in various electrical installations. By understanding the various options available, electrical engineers, contractors, and maintenance personnel can make informed. ventilation to heat producing cable such as power communication and other with the same or different width of the cable run. These fitting are including: elbow, horizontal cross, vertical inside. ng standards, performance standards, test standards and application in this document have been tested extens ompetent professional en completely installed, without damage either to conductors or structural system use maintain spacing or to keep cables in place when the tray is ect the minimum. This Section 27 05 36 includes metal cable trays of types and sizes included in NEMA VE 1. Throughout this document you will find designated 'specifier notes' or links to specific electronic resources in green to

better serve your needs.

What types of tees are available for cable trays



A. General: Except as otherwise indicated, provide metal cable trays, of types, classes and sizes indicated; with splice plates, bolts, nuts and washers for connecting units.



Fitting and accessories, with the same or different width of the cable run. All fittings are available in sizes and types corresponding to the straight cable tray sections. These fittings include: elbow, ...



Guide for making bends, tees, crosses, risers and reducers from straight sections of wire basket cable trays live at the project.



This document describes the types, materials, dimensions, and fittings for standard cable tray systems. It outlines ladder, perforated, solid bottom, trough, channel, and wire mesh cable tray types.



The document discusses different types of cable containment systems including cable trays, cable ladders, and cable trunking. It provides details on the ...



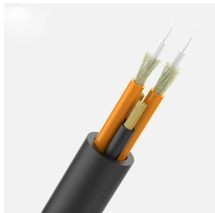
CleanTray Wireway right-angle installations for two 90-degree turns in frequent washdown areas. This 90-Degree Tee CleanTray, CT44TICSS item measures 4.00x4.00in with a material of SS304 finish ...



Discover the essential guide to cable tray systems. Learn about ladder, trough, and wire mesh types, key components, and expert installation tips for safe and organized cable management.



To facilitate easy installation of cable trays we also manufacture accessories e.g. Vertical bend, horizontal bend, cross and horizontal tee. Our range includes vertical bend, horizontal bend, cross ...



What is a cable tray ? ABB offers a number of different types of cable tray for use in a range of different applications and environments.



Our cable tray design considerations guide details key factors to consider when designing cable tray systems for industrial and commercial applications. Browse or download the cable tray catalog for ...



This article provides a comprehensive guide on the different types of cable tray accessories, their uses, and their importance in various electrical installations.



Discover the essential guide to cable tray systems. Learn about ladder, trough, and wire mesh types, key components, and expert installation tips ...



We offer a range of cable crossovers and tees, available in both equal and unequal measures, for light, medium, and heavy duty cable tray systems in widths of 50mm - 900mm.

Contact Us

For more information, pricing, or custom solutions, please contact us:

Website: <https://www.indzawo.co.za>

Email: sales@indzawo.co.za

Phone: +27 71 296 8473

Address: 22 Quantum Street, Midrand, 1685, Gauteng, South Africa

This document is for informational purposes only. Specifications subject to change without notice.

