

What material is the light-adjustable brightness module made of



Overview

[Materials] The body induction solar circuit board is made of glass fiber and abs materials, ensuring long service life and excellent performance. Spec: Item Type: Solar Circuit Board Material: Glass fiber+ABS Experience precise and reliable LED illumination with this versatile DIY adjustable brightness control board, designed for 15W-20W LED applications operating at 5V. Featuring charging protection and a convenient power switch, this compact module adapts seamlessly to your projects, with a sleek. [Adjustable Brightness & Remote Control] Easily adjust brightness levels and control timing remotely, saving time and energy efficiently. See more. Brightness Enhancement Film (BEF), also known as a Prism Sheet, is a key component in the backlight module of TFT-LCDs. It is an optical film with precise microstructures that concentrates scattered light from the light source into a forward direction, narrowing the spread to approximately 70. Unlike traditional rigid LED panels, a flexible LED module is built to bend, curve, and adapt to different surfaces without losing display quality. This makes it an ideal choice for creative installations, curved walls, cylindrical screens, stage backdrops, retail signage, and custom architectural. Temperature definitions Module

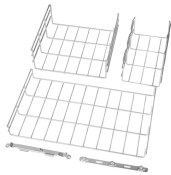
temperature Temperature measurements Examples of standard heat sinks
Heat sink material Thermal radiation and emissivity coefficient Thermal
interfacing Titanium LED driver temperature How to maximize system
lifetime?

Important points for luminaire design Default. In the display panel industry,
optical films are the core materials that determine image brightness,
uniformity, and contrast performance. With the development of LCD and OLED
technologies, the roles of different types of optical films in module structures
have become increasingly specialized, and.

What material is the light-adjustable brightness module made of



The Fortimo LED High Brightness Module (HBMt) Gen 3 System provides lambertian light distribution, making it suitable for a variety of applications, e.g. street lighting, area lighting, urban lighting and ...



This green PCB module offers adjustable brightness control, suitable for LED projects up to 20W, with a 5V power supply ensuring stable operation and efficient energy use.



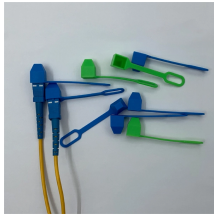
[Adjustable Brightness & Remote Control] Easily adjust brightness levels and control timing remotely, saving time and energy efficiently. [Materials] The body induction solar circuit board ...



Its 20 adjustable colors with the remote controller; Power: 192W; Lamp Beads Brightness: 45-50 lm Made of durable PVC material, which are IP68 waterproof and anti-scratch, they have ...



In a flexible PCB LED display, the circuit board is made from bendable materials that can handle repeated shaping without cracking easily. Compared with a rigid board, this structure allows ...



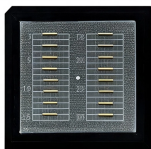
The photoresistor module is sensitive to ambient light and is generally used to detect the brightness of the surrounding environment, triggering microcontrollers or relay modules.



In the display panel industry, optical films are the core materials that determine image brightness, uniformity, and contrast performance.



Each module consists of a printed circuit board (PCB), LEDs, integrated circuits (ICs), and a protective plastic cover. The quality and specifications of the LED modules significantly influence the overall ...



Its 20 adjustable colors with the remote controller;
Power: 192W; Lamp Beads Brightness: 45-50 lm
Made of durable PVC material, which are IP68 ...



LCDs employ liquid crystal materials and polarization technology. When the liquid crystal molecules are influenced by an electric field, they change the polarization direction of light, thereby controlling the ...



In the display panel industry, optical films are the core materials that determine image brightness, uniformity, and contrast performance.



Brightness Enhancement Film (BEF), also known as a Prism Sheet, is a key component in the backlight module of TFT-LCDs. It is an optical film with precise microstructures that ...

Contact Us

For more information, pricing, or custom solutions, please contact us:

Website: <https://www.indzawo.co.za>

Email: sales@indzawo.co.za

Phone: +27 71 296 8473

Address: 22 Quantum Street, Midrand, 1685, Gauteng, South Africa

This document is for informational purposes only. Specifications subject to change without notice.

