

## What material is the core switch made of



### Overview

Includes dual power supplies, hot-swappable modules, link aggregation (LAG), and support for HSRP/VRRP. Modular chassis or stackable designs make it easy to scale as your network grows. 1X support, SNMP, CLI/Web GUI, and network access control. What is Spanning Tree Protocol (STP) and why is it important in core switch networks?

Can I use a cloud-managed core switch?

How does Quality of Service (QoS) impact core switch performance?

What Is a Core Switch in Networking?

Understanding the Backbone of Your Network A core switch in networking. In reality, most standard network switches are made with plastic housings. This is especially true for devices used in homes, offices, and small businesses. Plastic is widely used because it is: Under normal conditions, where temperature, humidity, and dust levels are controlled, plastic enclosures. A

core switch is a high-capacity, high-performance Layer 3 switch positioned at the physical backbone of an enterprise network.

## What material is the core switch made of



Learn what materials network switches are made of, from common plastic housings used in home and office devices to rugged metal enclosures in industrial Ethernet switches. Discover the ...



In summary, a core switch is a vital component of a network infrastructure that provides high-speed connectivity and intelligent traffic management capabilities. It's designed to handle large volumes of ...



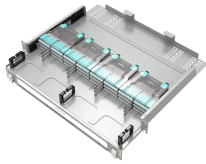
Core switches must support extremely high throughput, often with port speeds ranging from 10 Gigabit Ethernet (10G) to 400G+ Ethernet. To achieve wire-speed forwarding, these devices ...



A core switch operates at the italic core layer italic of a hierarchical network design, typically handling a massive volume of data traffic. Its primary function is to rapidly forward data ...



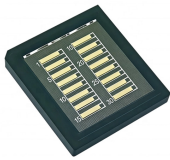
A core switch differs from a standard switch in the volume of data it can handle and bandwidth, as well as in its routing and QoS capabilities, which configure variable bandwidth for ...



Core switches and normal switches (also known as access switches) serve distinct purposes within a network. This article explores their key differences, helping you make informed ...



Typically, core switches are Layer 3 switches equipped with robust network management capabilities. They are characterized by numerous ports and high bandwidth, offering greater reliability,...



Discover what a core switch does in a 3-tier network model. Learn about ASIC routing, collapsed core vs dedicated core topologies, and SMB sizing guides.



Includes dual power supplies, hot-swappable modules, link aggregation (LAG), and support for HSRP/VRRP. Modular chassis or stackable designs make it easy to scale as your network grows. ...

## Contact Us

For more information, pricing, or custom solutions, please contact us:

Website: <https://www.indzawo.co.za>

Email: [sales@indzawo.co.za](mailto:sales@indzawo.co.za)

Phone: +27 71 296 8473

Address: 22 Quantum Street, Midrand, 1685, Gauteng, South Africa

This document is for informational purposes only. Specifications subject to change without notice.

