

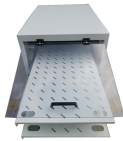
What is used to straighten overhead optical cables



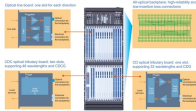
What is used to straighten overhead optical cables



Refer to the cable specification sheet for the specific allowed tension for each cable. Coils are required for all ribbon gel-free and gel-filled armor cables that are in a butt-type closure any other closure, or ...



Looking for advice on how to go about achieving this. So far I tried getting a metal pipe, about 4" long with a diameter of 3/4". I filled it up with my test bundle, and submerged it into 120 degree water in ...



Fiber optic cable can and often must be bent during infrastructure installation around electrical conduits, throughducts, telecom closets, and more. ...



The Stainless Steel Tube Straightening Tool is used to straighten the stainless steel buffer tubes on stranded stainless steel tube OPGW cables.



Use sheaves with a minimum diameter 8 of 25 times the cable diameter to guide the cable and prevent damage. In some of my overseas projects, I have seen teams use smaller ...



Fiber optic cable can and often must be bent during infrastructure installation around electrical conduits, throughducts, telecom closets, and more. The key is bending cables safely within ...



All fiber optic cables have specifications that must not be exceeded during installation to prevent irreparable damage to the cable. This includes pulling tension, minimum bend radius or diameter and ...



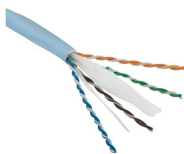
Our RIBE-OPTOFIT® accessories offer the ideal solution for connecting fiber optic overhead cables and terminating the optical signal, and perfectly complement proven RIBE-OPTOFIT® fittings.



Indoor & Outdoor Fiber Installations - Supporting cables in diverse environments. FAQ What is fiber optic mounting hardware used for? Fiber optic mounting hardware is used to secure, support, and ...



The pole assembly was developed to provide anchoring points for clamps to tension fiber optic cable during overhead network deployment.



Specially designed for guiding fiber optic or CATV cable safely and efficiently, Condux Cable Sheaves feature an innovative hanger arm that eliminates the possibility of cable coming off the sheave or ...

Contact Us

For more information, pricing, or custom solutions, please contact us:

Website: <https://www.indzawo.co.za>

Email: sales@indzawo.co.za

Phone: +27 71 296 8473

Address: 22 Quantum Street, Midrand, 1685, Gauteng, South Africa

This document is for informational purposes only. Specifications subject to change without notice.

