

What is the span of fireproof cable trays in Panama



Overview

The E90 (or E60) class signifies that the specific product has been in a fire test where the electric circuit has been functional for a minimum of 90 (or 60) minutes in the non-collapsed system. All lengths, and all material and surface treatment options up to a 600 mm width. Long span fireproof cable tray, is a type of cable tray specially designed for cable laying over long distances, commonly available in channel and ladder type, capable of providing support between long spans, and usually used in industrial facilities, buildings, bridges or tunnels. It is mainly. One of the most common questions regarding cable trays is their span length. How far can they stretch?

The answer depends on several factors, including the type of tray, the weight of the cables, and local building codes. Typically, cable trays can span anywhere from 6 to 24 feet without additional. Surface Finishing: Customized; Application: Network, Industrial, Construction, Cable Support, Cable Laying; Model Number: Customized; Product Name: Cable trunking; Material: Steel, Aluminum, Stainless Steel 201/304/316, FRP; Plastic spraying; OEM: Available; All Finishes: Pre-Gal, Electro-Gal, HDG, Powder. For fire-

resistant cable trays, load capacity must be considered in two conditions:
Normal operating conditions Fire exposure conditions, when steel strength is reduced by heat A tray that performs well at room temperature may deform or collapse quickly during a fire if it is not designed for. Meka Pro has tested and continues to test its products and cable management systems' fire resistance with the cables installed and connected according to the temperature curve in the EN 1363-1 standard. Large span cable tray is assembled by pultruded FRP profiles.

What is the span of fireproof cable trays in Panama



Cable trays are intended for the construction of fire-resistant cable paths with surface cable laying. Cable paths are constructed as standard or lightweight cable paths.



Meka Pro regularly tests the fire resistance of its products to ensure high-quality and safe cable management systems. The products are tested extensively and using several different installation ...



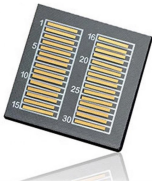
Fire rating defines how long a cable tray system can maintain its structural integrity during a fire. Common fire resistance periods include 60, 90, and 120 minutes, depending on project ...



Cable tray installation must comply with specific technical standards to ensure electrical safety, system reliability, and long-term maintainability. This document ...



Length (+ from /Min. order: 100 pieces)



Epoxy resin and epoxy resin composite cable tray are suitable for use in strong corrosive environment, large span and heavy load conditions. If you need know more about Qinkai FRP/GRP fiberglass ...



Long span fireproof cable tray can span longer distances, generally spanning up to 6 meters and up to 13 meters, which makes them very suitable for use in large factories, tunnels and other occasions.



Cable tray installation must comply with specific technical standards to ensure electrical safety, system reliability, and long-term maintainability. This document outlines the key requirements for cable tray ...



As a leading Chinese cable tray brand, Xinjie Cable Trays has dedicated 20 years to developing Xinjie Fire-Resistant Trays and Xinjie Long-Span Trays, serving 500+ projects nationwide ...



If you've ever wondered how far cable trays can span and what makes them a crucial component, you're in the right place. In this article, we'll explore the world of cable trays, discussing ...



Different from normal cable trays, Large span cable tray has large supporting span with high loading capacities. Large span cable tray is assembled by pultruded FRP profiles.

Contact Us

For more information, pricing, or custom solutions, please contact us:

Website: <https://www.indzawo.co.za>

Email: sales@indzawo.co.za

Phone: +27 71 296 8473

Address: 22 Quantum Street, Midrand, 1685, Gauteng, South Africa

This document is for informational purposes only. Specifications subject to change without notice.

