

What is the small busbar inside the electrical cabinet



Overview

A bus bar is a thick, rigid strip of conductive metal housed inside the electrical panel, serving as a primary conductor for high currents. As the main electrical conduction and power distribution part, the busbar ensures smooth, safe and efficient operation of. A busbar is defined as an electrically conductive strip or bar used to distribute power to multiple circuits in parallel. It is generally equipped with a set of voltage transformers, a fuse, a lightning arrester and other main electrical components. The fuses of the fuses provide protection for the voltage transformers. While circuit breakers are the visible safety components, the internal system that routes and distributes the power is built around the bus bar.

What is the small busbar inside the electrical cabinet



Think of a bus bar as the main highway for electrical current—allowing it to flow between components with minimal resistance and voltage drop. It replaces traditional wiring for high current applications ...



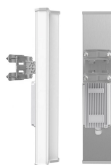
“A bus bar box is a type of electrical container used to keep, organize and hold the bus bars, which consist of strips of metal or bars that distribute electrical power.”



The small busbar at the top can be used to supply power to other high voltage cabinets. At the same time, it provides power for other equipment to meet the voltage requirements of ...



In electric power distribution, a busbar (also bus bar) is a metallic strip or bar, typically housed inside switchgear, panel boards, and busway enclosures for local high current power distribution, ...



Discover what is a circuit breaker busbar is and why it's important for power distribution. Our easy guide covers everything from the basics to safe installation.



The use of busbar for switchgear goes back to the dawn of electricity generation and is very common in both residential load centers of 200A and less and in industrial motor control center (MCC) ...



Electrical cabinet busbar is an electrical conductive bar installed inside the electrical cabinet, whose main task is to conduct electricity from the power source (generator, power grid) to ...



Electrical busbars are solid conductors used to carry and distribute high current in switchgear, panels, substations, and power systems. This guide explains how busbars work, ...



A bus bar is a thick, rigid strip of conductive metal housed inside the electrical panel, serving as a primary conductor for high currents. These bars are typically manufactured from copper or aluminum, ...



1-16 of over 4,000 results for "small bus bar" Results Check each product page for other buying options. Price and other details may vary based on product size and color.

Contact Us

For more information, pricing, or custom solutions, please contact us:

Website: <https://www.indzawo.co.za>

Email: sales@indzawo.co.za

Phone: +27 71 296 8473

Address: 22 Quantum Street, Midrand, 1685, Gauteng, South Africa

This document is for informational purposes only. Specifications subject to change without notice.

