

## What is a fibrous tail



### Overview

A vestigial tail, or human tail, is when a baby is born with soft tissue sticking out of their lower back. The condition is very rare, with as few as 60 documented cases in more than 100 years. It doesn't affect babies' overall health. In this article, we will discuss the anatomy of the coccyx - its structure, bony landmarks, ligaments and clinical relevance. Explore. When a human grows a tail, it's known as a human tail or vestigial tail. To study details of its structure, we subjected mouse and human spermatozoa to extraction for fibrous sheath, a chemical dissection procedure which. A true human tail, a rare congenital anomaly, represents an aspect of human biology and its evolutionary past. The fibrous sheath is a cylindrical cytoskeletal structure that determines the scope of the principal piece of the sperm tail and is adherent to the plasma membrane.

## What is a fibrous tail



Most humans grow a tail in the womb, which disappears by eight weeks. The embryonic tail usually grows into the coccyx or the tailbone.



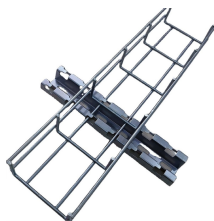
Attachments One of the key functions of the coccyx is as an attachment point for various structures. The gluteus maximus attaches to the coccyx, as does the levator ani muscle, which is a ...



Most humans grow a tail in the womb, which disappears by eight weeks. The embryonic tail usually grows into the coccyx or the tailbone.



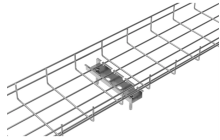
The association with a soft-tissue tail sign representing the vein or venous plexus in which it is located has been reported to be a specific CT feature of phleboliths, although it lacks ...



In some rarer cases, there are up to five vertebrae in the small tail, resulting in a true human tail, or vestigial tail. According to experts, this human tail is not really a tail at all. It is thought to be a hiccup ...



What is Fibrous Tissue? Fibrous connective tissue is also called dense connective tissue. It is composed of collagen fibers that are organized in a parallel manner.



A vestigial tail is a congenital (present at birth) condition when a baby has tissue that looks like a tail sticking out from their lower back.



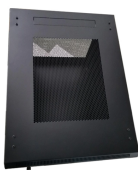
The true, or persistent, vestigial tail of humans arises from the most distal remnant of the embryonic tail. It contains adipose and connective tissue, central bundles of striated muscle, blood ...



A true tail, also known as a vestigial tail, is a benign structure covered by skin that contains adipose (fatty) tissue, connective tissue, central bundles of longitudinally arranged striated ...



The fibrous sheath is a cytoskeletal structure in the sperm tail principal piece composed of two longitudinal columns and multiple transverse ribs. To study details of its structure, we subjected ...



The fibrous sheath surrounds the principal piece of the tail of a spermatozoon (Dorland, 2011). The fibrous sheath is a cylindrical cytoskeletal structure that determines the scope of the principal piece ...

## Contact Us

For more information, pricing, or custom solutions, please contact us:

Website: <https://www.indzawo.co.za>

Email: [sales@indzawo.co.za](mailto:sales@indzawo.co.za)

Phone: +27 71 296 8473

Address: 22 Quantum Street, Midrand, 1685, Gauteng, South Africa

This document is for informational purposes only. Specifications subject to change without notice.

