

What does MXP optical module mean



Overview

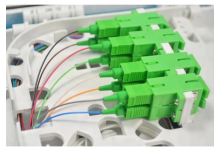
An MXP generally handles several client signals. Likewise, it demultiplexes optical signals coming in on a trunk and sends them out to individual client ports. The switched ring configuration. Rather, these terms, as well as "Path Protected Mesh Network" and "PPMN," refer generally to Cisco's path protection feature, which may be used in any to ological network configuration. Cisco does not recommend using its path protection feature in any particular to. Client-facing gray optical signals generally operate at shorter wavelengths, whereas DWDM colored optical signals are in the longer wavelength range (for example, 1490 nm = violet; 1510 nm = blue; 1530 nm = green; 1550 nm = yellow; 1570 nm = orange; 1590 nm = red; 1610 nm = brown). Some of the. The MXP ports on Arista leaf and spine switches can run as standards based 10Gb, 40Gb or 100Gb Ethernet, and simply require the correct fiber cables to enable multi-vendor interoperability. This technical guide is intended to provide accurate information for cabling triple-speed MXP ports with MTP. MarineXchange MXP is the first enterprise software suite for the cruise industry. It provides powerful tools to better manage cruise-ship operations and increases efficiency through wizards, batch processing, ship

participation and e-commerce integration. Some MXP modules have become de-facto. nsponder (TXP) and muxponder (MXP) cards. Refer to the Cisco ONS 15454 Troubleshooting Guide or the Cisco ONS 154 g TXPs and MXPs can be service affecting.

What does MXP optical module mean



The Small Form Pluggable (SFP) MXP-635-MM (multi-mode) is a fibre optic transceiver allowing communications for up to a maximum distance of 2km between fibre optic converters. This SFP ...



The optical module serves as a crucial component in optical fiber communication systems, operating at the physical layer, which is the lowest layer in the OSI model. Its primary ...



Every MXP module can be acquired separately to perfectly meet your specific requirements. Enjoy the best service for each module including customized adjustments, training for your personnel, regular ...



The MXP ports on Arista leaf and spine switches can run as standards based 10Gb, 40Gb or 100Gb Ethernet, and simply require the correct fiber cables to enable multi-vendor interoperability.



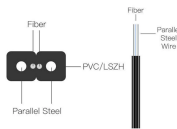
Transponding or muxponding is the process of converting the signals between the client and trunk wavelengths. An MXP generally handles several client signals. It aggregates, or multiplexes, lower ...



The Small Form Pluggable (SFP) MXP-635-SM (single-mode) is a fibre optic module allowing communications for up to a maximum distance of 20km between fibre optic converters.



Provision Transponder and Muxponder Cards This chapter explains how to provision transponder (TXP) and muxponder (MXP) cards. The provisioning must be performed before you provision a WDM network ...



Each operating mode provides configuration access to a specific group of CLI commands. Note: Not all CLI commands are supported on all 7210 SAS platforms in all modes of operation. Users can only ...



PHY (10GBASE-LR), 10GE WAN PHY (10GBASE-LW), or 10G-FC signals. The client side XFP pluggable module supports LC connectors and is equipped with a 1310-nm laser.



The Cisco NCS2K-1.2T-MXP-L= is a high-density, multi-service transport module designed for the Cisco NCS 2000 series, targeting service providers and hyperscalers requiring terabit-scale capacity, ...



Optical modules typically have an electrical interface on the side that connects to the inside of the system and an optical interface on the side that connects to the outside world through a fiber optic ...

Contact Us

For more information, pricing, or custom solutions, please contact us:

Website: <https://www.indzawo.co.za>

Email: sales@indzawo.co.za

Phone: +27 71 296 8473

Address: 22 Quantum Street, Midrand, 1685, Gauteng, South Africa

This document is for informational purposes only. Specifications subject to change without notice.

