

## What are the methods for connecting network rack patch cables



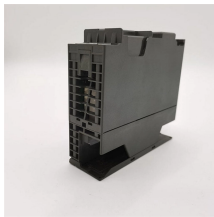
### Overview

Use SFP+ DAC cables or fiber (LC-LC) for switch-to-switch uplinks instead of copper RJ45 patch cables for lower latency and heat. Avoid tight cable bundling with PoE++ loads. Follow TSB-184-A standards for loose bundling to prevent overheating. Network cabinet cabling describes the structured connection and arrangement of all IT components in a server rack. The aim is a secure, maintainable and scalable operation of the network environment. Step-by-step guide: In this way, patch panels, switches, cable routing and documentation are. Server racks, from a strict technical point of view, are designed to house computers that are dedicated to serving out data and the associated uninterruptible power supplies (UPS) to keep them running in the event of power failure. These racks enable you to achieve a proper organization, guarantee your equipment has sufficient cooling, increase security. This guide walks you through how to build a dependable patch panel system—step by step. We'll cover technical best practices, procurement tips, real-world challenges, and answers to common questions. Whether you're upgrading an existing setup or building from scratch, this article helps you make.

## What are the methods for connecting network rack patch cables



Server rack cable management plays a critical role in maintaining an organized and efficient IT environment. In server rooms and data centers, multiple power and data cables connect ...



Our guide delivers actionable, step-by-step best practices for rack layout, cable management, and patch panel installation. Following these steps helps you build a clean and ...



2026 Guide to Network Rack Cable Management. Includes Rack Unit Calculator, PoE++ thermal planning, Grounding safety, and Cat6A vs Cat6 advice for 10Gbps infrastructure.



Learn the step-by-step network patch panel and keystone jack wiring methods, including essential tools, T568A/B wiring sequences, and tool-free installation tips.



2026 Guide to Network Rack Cable Management. Includes Rack Unit Calculator, PoE++ thermal planning, Grounding safety, and Cat6A vs Cat6 advice ...



Discover how to wire a network rack with step-by-step instructions, expert tips, and best practices.



This guide walks you through how to build a dependable patch panel system—step by step. We'll cover technical best practices, procurement tips, real-world challenges, and answers to ...



This guide explains smart rack cabling steps that work for homes and small businesses. You will learn layout basics, spacing rules, labeling habits, and grounding steps.



Practice-oriented guide to network cabinet cabling with documentation template, safety aspects & software tips.



Learn best practices for patch panel and switch setups, including how to connect patch panel to switch and use Ethernet patch panel cable management to keep racks clean and easy to ...



First and foremost, your permanently installed cable should already be labeled along with the associated ports on the patch panel in your server/network rack. Write this all down on a piece of ...



Learn the step-by-step network patch panel and keystone jack wiring methods, including essential tools, T568A/B wiring sequences, and tool-free installation tips.

## Contact Us

For more information, pricing, or custom solutions, please contact us:

Website: <https://www.indzawo.co.za>

Email: [sales@indzawo.co.za](mailto:sales@indzawo.co.za)

Phone: +27 71 296 8473

Address: 22 Quantum Street, Midrand, 1685, Gauteng, South Africa

This document is for informational purposes only. Specifications subject to change without notice.

