

What are the ideal dimensions for an indoor electrical distribution box



Overview

Their dimensions are generally around 2 inches wide by 4 inches tall, with depths varying from 1-1/2 inches to 3-1/2 inches. Within electrical installations regulated by NEC and UL standards, the terminology surrounding junction boxes extends well beyond simple measurements of length and width. Choosing the proper enclosure requires fluency in the language of gangs, physical footprint, and—most importantly— internal. What are standard electrical box dimensions?

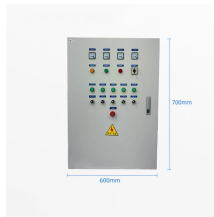
Standard sizes vary by type, but single-gang boxes are typically around 2" x 3" x 3. What size electrical box do I need for an outlet?

Most standard outlets use a single-gang box. This guide explains typical wall-mount and floor-standing dimensions, how to read catalog sizes, and how to choose the right enclosure size for your layout. There is no single global chart for standard electrical enclosure sizes.

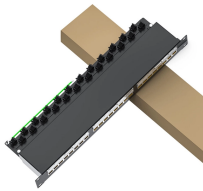
What are the ideal dimensions for an indoor electrical distribution b



Complete guide to electrical box sizes and dimensions. Includes size charts, depth comparison, volume calculation and industrial metal electrical box selection tips.



NEC® Reference stallation and use of boxes. The article includes table references that guide the electrician in the selection of the proper box size necessary to safely accommodate ele trical service ...



Find the right electrical DB box size for your home or project. Learn standard dimensions, NEC 2026 compliance, and key specs. Click to get expert sizing advice now.



Electrical enclosure sizes are not universal, but most manufacturers follow common size families. This guide explains typical wall-mount and floor-standing dimensions, how to read catalog ...



Choosing the right electrical junction box size is crucial for safety and code compliance in your US projects. This guide helps you determine the correct dimensions based on wire fill capacity, ...



Learn standard electrical box dimensions for outlets, switches, and junction boxes. Compare sizes, depths, volume, and clearance for safe installations.



Choosing the right electrical junction box size is crucial for safety and code compliance in your US projects. This guide helps you determine the correct ...



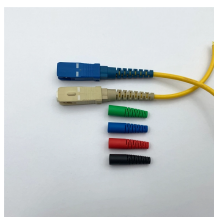
The National Electrical Code (NEC) 2023 provides detailed guidelines to help professionals make informed decisions. This article outlines the steps and considerations for determining the correct ...



Explore NEC-based standards, box dimensions, material guidelines, and installation precision in this complete electrical junction box selection and compliance handbook.



Here we will explain how to determine the correct size of electrical box for your wiring project using some simple guidelines and calculations. Box sizing is important for several reasons: It ...



But of all the variables to consider when choosing boxes, size (capacity) usually trumps the others. Correctly sized boxes are required by code and make your job easier because you don't have to ...

Contact Us

For more information, pricing, or custom solutions, please contact us:

Website: <https://www.indzawo.co.za>

Email: sales@indzawo.co.za

Phone: +27 71 296 8473

Address: 22 Quantum Street, Midrand, 1685, Gauteng, South Africa

This document is for informational purposes only. Specifications subject to change without notice.

