

What are fiber optic switches



What are fiber optic switches



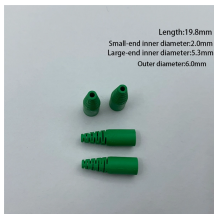
Fiber-optic switches are optical switches in the context of fiber optics. The simplest device is an on/off switch with one input and one output, which allows light to ...



Optical switches are devices that route light signals from one path to another without converting them into electrical signals first. They're a core component in fiber-optic networks, where ...



Fiber Optic Switches are control devices used to redirect or guide light along the desired optical channels or paths in an optical fiber network to send data to the client address.



Fiber optic switches route an optical signal without electro-optical and opto-electrical conversions. Fiber optic switches can interface with two types of cables: Single mode is an optical fiber that will allow ...



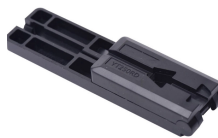
Fiber optic switches are an essential component of modern communication systems. They provide a way to control the flow of light in fiber optic networks, allowing for more efficient and ...



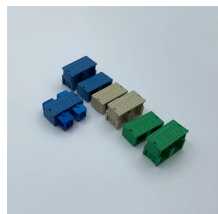
Fiber-optic switches are optical switches in the context of fiber optics. The simplest device is an on/off switch with one input and one output, which allows light to pass with low insertion loss when open, ...



Definition of Fiber Optical Switch. A fiber optical switch is a multi-port telecommunications network bridging device primarily used to connect multiple optical fibers and control the routing of ...



If you plan to upgrade to fiber optic network or blend fiber optics into your existing legacy network, you will require a fiber optic network switch which is compatible with the other devices on the network. ...



What Are Fiber Optic Switches? A fiber optic switch is a network device designed to manage and direct optical signals. Unlike traditional electrical switches, which process data via copper-based ...



Optical switches are the conduits that direct light signals within fiber optic networks. They differ from traditional electrical switches by manipulating light paths rather than electrical currents.



A fiber optic switch is an electronic device that allows multiple fiber optic cables to be connected and selectively route data between them. The switch receives data packets from one input fiber optic ...

Contact Us

For more information, pricing, or custom solutions, please contact us:

Website: <https://www.indzawo.co.za>

Email: sales@indzawo.co.za

Phone: +27 71 296 8473

Address: 22 Quantum Street, Midrand, 1685, Gauteng, South Africa

This document is for informational purposes only. Specifications subject to change without notice.

