

Vertical cable tray installation in corridors



Overview

Cable Types: Only use conductors rated for open-air environments, such as Tray Rated (Type TC) or Metal-Clad (Type MC) cables. Clearances: Maintain at least 12 inches of vertical clearance above trays for installation and maintenance access (2026 NEC update). This guide covers the critical steps, from selecting the right electrical cable tray and performing accurate cable fill. Method Statement installation of Cable Trays and Ladders - Planning Engineer FZE. Here's what you need to know: Cable Types: Only use, en completely installed, without damage either to conductors or structural system use maintain spacing or to keep cables in place when the tray is ect the minimum bend ra-dius for cables as they exit the bottom of the cable tray. Cable tray system design shall comply with National Electrical Code® (NEC®) Article 392, NEMA VE 1, and NEMA FG 1 and follow safe work practices a described in NFPA 70E. It ensures that all installation activities follow authorized plans, specifications, and standards. The objective is to ensure safety, quality and compliance during the.

Vertical cable tray installation in corridors



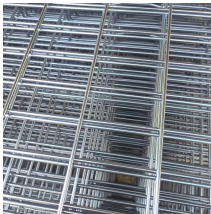
This guide covers the critical steps, from selecting the right electrical cable tray and performing accurate cable fill calculations to managing a safe cable pull through and ensuring all bonding and grounding ...



To ensure that the complete ladder tray wiring system performs as designed, it is important that it is properly installed. Personal injury as well as property damage will result if proper installation and ...



It describes inspecting and storing cable trays upon receipt, installing trays flat or vertically, fixing trays to structures, designing trays to carry loads, providing ...



Vertical fittings allow for a change in direction to a different plane. Covers are used when additional security is required. Splices join any combination of straight sections and fittings. Supports provide ...



Step-by-step cable tray and conduit installation method with safety, quality and inspection procedures as per IEEE standards.



This document provides standard operating procedures for installing cable tray systems. It discusses receiving and unloading procedures, storage guidelines, common installation tools, and methods for ...



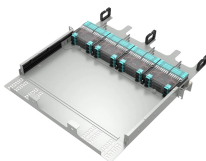
Core rules for selecting, installing, grounding, and filling cable trays—clearances, materials, separation, and bonding explained.



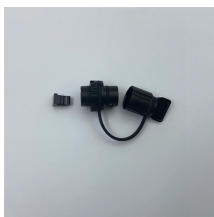
Whether you're building a commercial setup or upgrading an industrial plant, proper cable tray installation ensures neat wiring, safe access, and easy maintenance. But before you lay the first tray ...



The Cable Tray system is installed in electrical rooms, plant rooms, and service corridors. This section will guide you through the necessary steps to ensure a successful installation.



Each tray section should be bonded to an adjoining section using listed bonding jumpers or a continuous ground wire and clamps (such as a copper ground bolt). Powder coated tray requires the removal of ...



Cable tray length is selected based on the load to be supported, the distance between the supports (also referred to as the span), and handling and installation constraints.



Below is the detailed cable tray installation method statement not only for cable tray but also applicable for GI ladder and trunking for indoor and outdoor applications ...



Our wind certification report provides you with list of acceptable B-Line series cable tray supports, fittings and covers based off of the environmental conditions, cable loading, and type of cable tray in your ...

Contact Us

For more information, pricing, or custom solutions, please contact us:

Website: <https://www.indzawo.co.za>

Email: sales@indzawo.co.za

Phone: +27 71 296 8473

Address: 22 Quantum Street, Midrand, 1685, Gauteng, South Africa

This document is for informational purposes only. Specifications subject to change without notice.

