

## USBKVM switch failed to switch



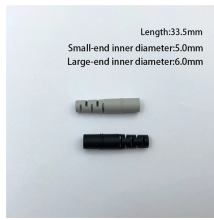
### Overview

The problem was solved by powering off the KVM switch and powering it back on. You should remove all USB. When using a KVM switch, you may occasionally encounter issues related to USB connections. Problem 1: The KVM. When I go to plug this into any of the USB-C ports on my Windows 11 desktop machine, I get the following error: Windows has stopped this device because it has reported problems. (Code 43) The USB hub failed to reset. 0 (type A) port on the KVM switch to. One directly connected to the Desktop and a second mouse connected via the KVM?

At the same time?

Disable the second mouse directly connected to the desktop.

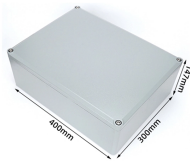
## USBKVM switch failed to switch



One directly connected to the Desktop and a second mouse connected via the KVM? At the same time? Disable the second mouse directly connected to the desktop. Unplug thereafter. ...



Users who have recently bought a KVM switch for their desktop gaming PC and laptop running Windows 11 have reported losing USB connections. In this article, we'll discuss possible ...



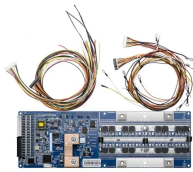
Article: How do I reset a KVM switch if video or USB stops working correctly? Racks, Shelves, KVMs malcolm September 28, 2022, 10:47am



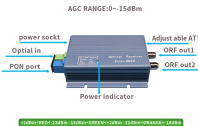
I've attached a very professionally drawn diagram to try and explain visually. Now I know there's an identical HDMI version of the KVM switch that I got. It is \$20 more expensive, however, so ...



Please contact the manufacturer of the KVM Switch and ask them if there are appropriate drivers for Windows 10, and if so, install them on your computer. You can also try to find drivers for ...



Article: How do I reset a KVM switch if video or USB stops working correctly? Racks, Shelves, KVMs malcolm September 28, 2022, 10:47am



I've attached a very professionally drawn diagram to try and explain visually. Now I know there's an identical HDMI version of the KVM switch that I ...



We recently put some new servers in our rack that only have USB inputs for the keyboard and mouse. When connected through USB, the keyboard and mouse do not respond. I ...



The problem is: there are four USB 3.0 blue connections on the front of the KVM switch. According to the manual, they are supposed to be for sharing peripheral devices.



Waterproof and dustproof, reliable and safe  
The outer classic lock design allows the seal ring of the cabinet and door to be seamlessly compressed without leaving a trace of gaps

To resolve this try using different ports for the keyboard and mouse on the KVM switch. If there are ports not labeled for keyboard and mouse then try those. If there are only two USB ports ...



However, when using a KVM switch, you may encounter some common issues. We will now introduce some of these problems and provide solutions to help you make better use of a KVM ...



When I go to plug this into any of the USB-C ports on my Windows 11 desktop machine, I get the following error: Windows has stopped this device because it has reported problems. (Code ...

## Contact Us

For more information, pricing, or custom solutions, please contact us:

Website: <https://www.indzawo.co.za>

Email: [sales@indzawo.co.za](mailto:sales@indzawo.co.za)

Phone: +27 71 296 8473

Address: 22 Quantum Street, Midrand, 1685, Gauteng, South Africa

This document is for informational purposes only. Specifications subject to change without notice.

