

Indzawo Optic Connect

US Core Switch 100G



US Core Switch 100G



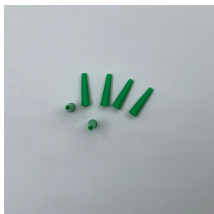
The QFX5100 Series are access & top-of-rack 10/25/40/100GbE switches, optimized for application delivery & virtualized data centers.



Built for core, carrier, superhub, and studio applications, the Media Links MDX32C is a high performance IP Media Switch designed to work in concert with Media Links' MDX family of edge and aggregation ...



Use the AirLive L3-10XGF26-100GF as the connecting link between a 100G Core switch and the rest of the network. Using its 10G Fiber ports to transfer data fast and reliable.



The UfiSpace S9110-32X is a high-performance data center switch with 32 x 100G QSFP28 ports, Broadcom Trident3-X7 silicon, and an Intel Denverton 4-core processor. It offers efficient Ethernet ...



In a compact 1RU form factor, the switch provides line-rate L2 and L3 switching across the 32 x QSFP28 ports, and each QSFP28 port can be configured as ...



The C-LIGHT CLS6862-54XC is a 100G high-performance switch designed for data centers and enterprise networks, delivering robust performance, reliability, and scalability.



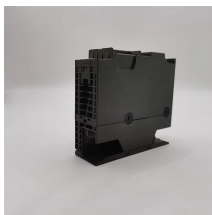
Edgecore DCS204 is a high-performance 100G QSFP28 switch ...



In a compact 1RU form factor, the switch provides line-rate L2 and L3 switching across the 32 x QSFP28 ports, and each QSFP28 port can be configured as 2x50G, 4x25G, 1x40GbE or 4x10GbE by using ...



Edgecore DCS204 is a high-performance 100G QSFP28 switch designed for data center and cloud environments that require dense high-speed connectivity, strong throughput, and flexible open ...



The devices observed represent a noticeable increase in port density, throughput capability, and overall positioning compared to the current UniFi lineup. Four specific devices stand ...



FS 100 Gigabit data center switches with build-in broadcom switch chip provides powerful hardware switching capacity and data center features (supporting stacking, MLAG, RoCEv2, PFC, ECN, ...



Explore Edgecore's high-performance 100G and 40G bare-metal data center switches for ToR and spine deployments. Featuring the industry's first OCP-accepted 100GbE switch, we deliver scalable, non ...



The QFX5100 Series are access & top-of-rack 10/25/40/100GbE switches, optimized for application delivery & virtualized data centers.

Contact Us

For more information, pricing, or custom solutions, please contact us:

Website: <https://www.indzawo.co.za>

Email: sales@indzawo.co.za

Phone: +27 71 296 8473

Address: 22 Quantum Street, Midrand, 1685, Gauteng, South Africa

This document is for informational purposes only. Specifications subject to change without notice.

