

Two-phase two-relay relay protection



Two-phase two-relay relay protection



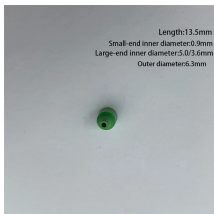
Eaton's protective relays provide you with unique microprocessor-based devices that eliminate unnecessary trips, isolate faults, protect motors and breakers, and provide system information to help ...



When underfrequency protection is employed, two underfrequency relays connected with "AND" tripping logic and connected to separate voltage sources are recommended to enhance scheme security.



Protective relays and devices have been developed over 100 years ago to provide "lastline" of defense for the electrical systems. They are intended to quickly identify a fault and isolate it so the balance of ...



Types of protection relays are mainly based on their characteristic, logic, on actuating parameter and operation mechanism. Protective relays can be categorized based on their operating ...



A fast and selective arc fault mitigation for air-insulated LV & MV switchgear and Relion protection and control relays and sensor technology protect staff and plant facilities for many years.



I have seen in certain power companies protection schemes where they use only two relays on two phases and no phase protection on the third relay but they have a ground fault ...



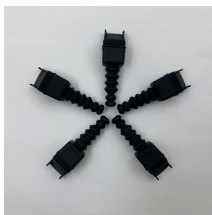
Overview The objective of this presentation is to convey a basic understanding of protective relays to an audience of engineers already familiar with low voltage protective device coordination.



Protect critical components in your power system with a wide range of SEL protective relays covering applications and use cases from low to high-voltage protection.



Electromechanical protective relays at a hydroelectric generating plant. The relays are in round glass cases. The rectangular devices are test connection blocks, used for testing and isolation of ...



Feb 24, 2012· Types of protection relays are mainly based on their characteristic, logic, on actuating parameter and operation mechanism. Protective ...



Phase-to-phase short-circuit protection, for generators. The current tripping set point is voltage-adjusted in order to be sensitive to faults close to the generator which cause voltage drops ...

Contact Us

For more information, pricing, or custom solutions, please contact us:

Website: <https://www.indzawo.co.za>

Email: sales@indzawo.co.za

Phone: +27 71 296 8473

Address: 22 Quantum Street, Midrand, 1685, Gauteng, South Africa

This document is for informational purposes only. Specifications subject to change without notice.

