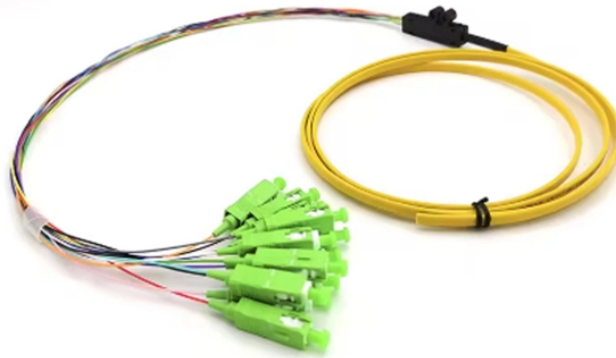


Two lights are on the telecom fiber optic router



Overview

Orange, amber, or red lights usually indicate a problem ranging from a firmware update in progress to a lost internet connection. Most of these issues can be resolved with a simple power cycle (unplug for 30 seconds, plug back in). The LEDs on your modem, optical network terminal (ONT), router, or modem/router combo (gateway) are most likely blinking because they're communicating what the device is doing, or there's an error. All networking devices, like modems and routers, provide a row of status lights that represent the. What does that blinking light on your modem or router mean?

This guide covers every LED color and pattern across Xfinity, Spectrum, AT&T, and CenturyLink gateways, with step-by-step fixes for the most common issues. If you have ever glanced at your modem or router and seen an unfamiliar blinking. Those blinking lights on your modem and router aren't just there to look pretty. These lights help users understand the operational state of the device and its various components. No Light: The ONT is not receiving.

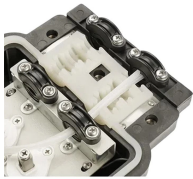
Two lights are on the telecom fiber optic router



Router status lights, often referred to as LED indicators, are small lights on the front panel of your router. These lights help users understand the operational state of the device and its various components.



This guide breaks down every common light color and pattern you will see on modems and routers from major ISPs including Xfinity, Spectrum, AT&T, and CenturyLink.



The lights on your ONT can indicate a range of things, including whether the device is powered on, whether it's connected to the fiber-optic network, and whether there are any errors or ...



The tables in this article provide detailed information about the possible appearances of the LED lights on each device, the possible causes of each state, and what you should do.



Your FIOS router will have lights for Wi-Fi networks, usually labeled “2.4 GHz” and “5 GHz.” When these lights are on, it means that your Wi-Fi networks are active.



Not sure what the lights on your fiber equipment mean? This guide explains each status light and how to troubleshoot common issues.



Why are your modem and router lights blinking? Learn the common causes, what each light means, and easy fixes to quickly get your internet connection back.



Green or white lights on a modem or router generally indicate normal operation. Orange, amber, or red lights typically signal a partial connection, hardware error, or lost signal — though the ...



All modems, ONTs, routers, and gateways use blinking lights to indicate processes, data transmissions, and sometimes errors. A light blinking slowly and steadily typically indicates the ...



Decode modem router lights meaning with our complete guide. Learn what blinking patterns and colors indicate, troubleshoot connection issues, and fix problems fast.

Contact Us

For more information, pricing, or custom solutions, please contact us:

Website: <https://www.indzawo.co.za>

Email: sales@indzawo.co.za

Phone: +27 71 296 8473

Address: 22 Quantum Street, Midrand, 1685, Gauteng, South Africa

This document is for informational purposes only. Specifications subject to change without notice.

