

Trunk Fiber Optic Cable Cabling Handover



Overview

Fiber trunks are pre-terminated cable assemblies connecting switches, servers, patch panels, and zone distribution areas in the data center, or serving as the backbone of enterprise fiber networks. Pre-terminated design for fast and reliable. The Relevance Inspector will open in the Coveo Administration Console. Please review your Product Country of Use settings and filters to proceed. All MTP trunks are manufactured with Corning® CleanAdvantage™, MTP trunk. A fiber trunk cable system, fully configurable to exactly suit your design. Below are the detailed installation steps and precaution.

Trunk Fiber Optic Cable Cabling Handover



The meaning of TRUNK is the main stem of a tree apart from limbs and roots —called also bole. How to use trunk in a sentence.



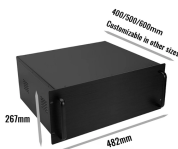
It is one of the mechanically and thermally most robust cable dividers for loose tube cables at the smallest diameters. With its integrated PreCONNECT square interface, the cable divider can be tool ...



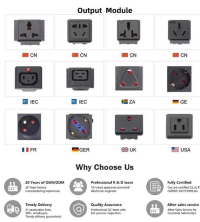
FiberHubb trunk assemblies mate with all Hubbell cassettes and adapter panels to complete the end-to-end fiber solution. Save time and labor with assemblies designed to easily migrate to 40G, 100G, ...



TRUNK definition: the main stem of a tree, as distinct from the branches and roots. See examples of trunk used in a sentence.



Discover Storage Trunks on Amazon at a great price. Our Storage & Organization category offers a great selection of Storage Trunks and more. Free Shipping on Prime eligible orders.



A trunk is a large, strong case or box used for storing things or for taking on a trip. Maloney unlocked his trunk and took out some coveralls.



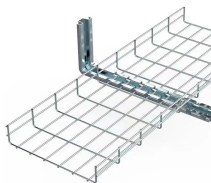
Amphenol's Trunk Cables are pre-terminated cable assemblies designed for seamless integration in backbone and horizontal cabling networks. These cables provide cost-effective scalability while ...



MPO MTP Trunk Cables: 2026 Guide for High-Density Fiber Architecture The transition toward \$800\$ Gbps and early \$1.6\$ Tbps Ethernet in data centers has fundamentally altered ...



Our trunks can be configured with up to 432 fibers with 24-fiber MPO connectors. To see a full list of configuration options, refer to our data sheet below. Discover the different performance tiers and ...



With non-pinned MTP connectors on both ends, these fiber trunk cable assemblies are designed to interface with the EDGE solutions or Plug & Play™ systems modules.



Definition of trunk noun in Oxford Advanced Learner's Dictionary. Meaning, pronunciation, picture, example sentences, grammar, usage notes, synonyms and more.



The term FTTH is an abbreviation of Fiber to the Home, which is the installation of fiber optic cables, connectors, and devices. Below are the detailed ...



The term FTTH is an abbreviation of Fiber to the Home, which is the installation of fiber optic cables, connectors, and devices. Below are the detailed installation steps and precaution.



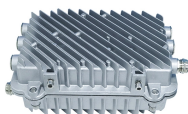
Fiber Optic Network Handover Checklist Project Name Location



Fiber trunks are pre-terminated cable assemblies connecting switches, servers, patch panels, and zone distribution areas in the data center, or serving as the backbone of enterprise fiber networks.



A person's trunk is the main part of the body, not including the head, legs, or arms.



Our indoor tethered LC cassette trunk cable assembly delivers high density, the pre-terminated fiber optic connections for reliable, scalable data center networks, for complex SAN applications.

Contact Us

For more information, pricing, or custom solutions, please contact us:

Website: <https://www.indzawo.co.za>

Email: sales@indzawo.co.za

Phone: +27 71 296 8473

Address: 22 Quantum Street, Midrand, 1685, Gauteng, South Africa

This document is for informational purposes only. Specifications subject to change without notice.

