

## There is a noise coming from the fiber optic splice box



### Overview

Signal loss can occur in Fiber Optic Splice Closure (FOSC) due to various reasons such as dirty connectors, broken fibers, or loose connections. To troubleshoot this issue, you can try the following: Inspect the connectors for dirt or damage. Fiber optic troubleshooting is an essential skill for network administrators, technicians, and engineers responsible for maintaining and repairing fiber optic systems. These high-speed, high-capacity communication networks are increasingly replacing copper cables, offering superior performance and. If it is white there is no other equipment that could be causing that noise. In this section, we will discuss these issues and how to troubleshoot them.

## There is a noise coming from the fiber optic splice box



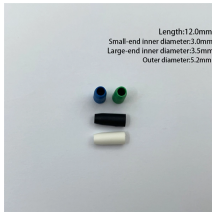
Fiber optic cables are often joined using splices, but a bad splice can introduce significant signal loss.



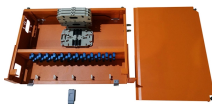
Troubleshoot fiber optic issues like a pro with our expert guide. Resolve common problems and ensure seamless connectivity.



Solve common fiber optic network problems—attenuation, damage, connector issues. Learn troubleshooting steps, tools, and prevention to ensure reliable connectivity.



Signal loss can occur in Fiber Optic Splice Closure (FOSC) due to various reasons such as dirty connectors, broken fibers, or loose connections. To troubleshoot this issue, you can try the ...



Learn how to troubleshoot fiber networks. Identify common issues like high loss, dirty connectors, and signal drops, with practical solutions for optical links.



This blog post explores common issues in optical fiber networks, including signal loss, attenuation, splice and connector issues, and performance degradation, and provides practical ...



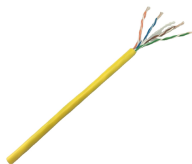
Learn best practice troubleshooting options when working to address fiber issues that may result after deployment.



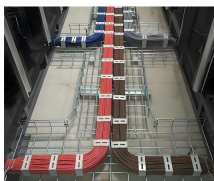
What factors should be considered when selecting a fiber optic splice box? Consider the type of fibers, environmental conditions (indoor vs. outdoor), capacity ...



I've heard some of the ATT gateways make a faint noise when you run a speedtest but that's about it. Trying to think what a tech would have installed in the attic that needs power.



Despite their importance, fiber optic splice closure can experience a range of issues that can cause problems with network performance. In this article, we will explore some of the most common issues ...



What factors should be considered when selecting a fiber optic splice box? Consider the type of fibers, environmental conditions (indoor vs. outdoor), capacity requirements for current and future needs, ...

## Contact Us

For more information, pricing, or custom solutions, please contact us:

Website: <https://www.indzawo.co.za>

Email: [sales@indzawo.co.za](mailto:sales@indzawo.co.za)

Phone: +27 71 296 8473

Address: 22 Quantum Street, Midrand, 1685, Gauteng, South Africa

This document is for informational purposes only. Specifications subject to change without notice.

