

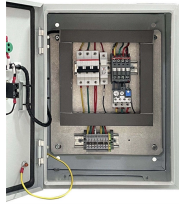
There are marks in the middle of the fusion splice of multimode fiber



Overview

Verify Splicing and Heating Settings: If the splicer is set to Auto, change the programs to align with the fiber type you are using. Confirm the Cleave Angle is Accurate: Proper cleave angles ensure better fiber splicing, leading to lower loss levels. Fibre fusion splicers are critical instruments in modern optical fibre installation and maintenance. When properly maintained and operated, they produce low-loss, high-strength splices. The guide provides the complete workflow, covering safety precautions, tool selection, fiber preparation, fusion operation, quality control, and. That is why we prepared this overview of common Splicing Issues – to help you recognize what you are seeing on the screen and adjust your workflow to achieve stable, low-loss splices. Fusion splicing is the most widely used method of splicing as it provides for the lowest loss and least reflectance, as well as providing the strongest and most reliable joint between two fibers.

There are marks in the middle of the fusion splice of multimode fiber



When fusion splicing in the field, a number of issues can arise leading to high splice loss. Use this checklist to troubleshoot common issues.



To resolve this, first check the fibre ends. Ensure they are clean using alcohol wipes or specialized fibre cleaning kits. Inspect cleave quality—use a precision cleaver with a sharp blade to ...



Learn how to identify fusion splicing issues, understand their causes, prevent splice errors through proper preparation and arc calibration.



Even a minor error can lead to significant signal loss or faulty splices. The following describes the most common problems, their quick diagnosis, and recommended solutions.



When fusion splicing in the field, a number of issues can arise leading to high splice loss. Use this checklist to troubleshoot common issues.



Learn Fiber Optic Fusion Splicing: step-by-step guide to safe, precise fiber prep, fusion, and testing for low-loss, high-quality splices in optic networks.



Fusion splicing involves strongly heating the two fiber endfaces until the material becomes soft and then joining them so that they fuse together. This process results in a permanent splice, often with very ...



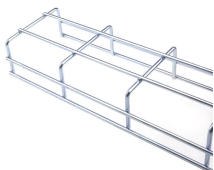
Bubbles or cracks at the splice during fusion splicing. This may be due to poor fiber cutting, such as a tilted end face, burrs, or unclean end face. Clean the fiber before performing the...



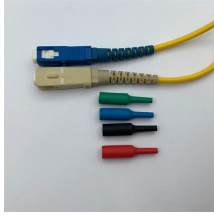
Fusion splicing involves strongly heating the two fiber endfaces until the material becomes soft and then joining them so that they fuse together. This process ...



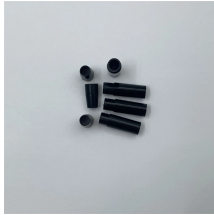
Learn how to splice fiber optic cable using fusion splicing with this complete step-by-step guide. Includes tools, best practices, loss standards (ITU-T G.652), cost analysis, and FAQs for ...



Multimode fibers can be harder to fusion splice as the larger core with many layers of glass that produces the graded-index profile are sometimes harder to match up, especially with fibers of ...



Learn fiber fusion splicing steps, tools, and troubleshooting with Weunion AI9/AI10 splicers & NK3200/NK4000 OTDRs. Optimize precision for FTTH, 5G, and data centers.



Learn fiber fusion splicing steps, tools, and troubleshooting with Weunion AI9/AI10 splicers & NK3200/NK4000 OTDRs. Optimize precision for ...

Contact Us

For more information, pricing, or custom solutions, please contact us:

Website: <https://www.indzawo.co.za>

Email: sales@indzawo.co.za

Phone: +27 71 296 8473

Address: 22 Quantum Street, Midrand, 1685, Gauteng, South Africa

This document is for informational purposes only. Specifications subject to change without notice.

