

The power distribution box trips as soon as power is supplied



The power distribution box trips as soon as power is supplied



If the breaker trips immediately, even with nothing plugged in, it's likely you have a short, not an overload. If the breaker holds, go back to the room and start plugging things in and turning ...



Discover common causes and solutions for power tripping in your home. Learn when to call a professional electrician. Read on to know more!



Check the load: confirm whether the use of electrical appliances in the home exceeds the load capacity of the distribution box, reduce the load appropriately or increase the appropriate power supply.



There are many reasons that trigger the equipment to the trip, and only by finding the root cause can we give targeted solutions.



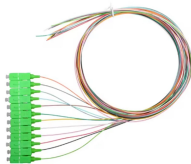
Distribution boxes are the unsung heroes of our electrical systems, quietly managing power until something goes wrong. When they start tripping, overheating, or making strange noises, it's more ...



Short circuit is characterized by: trip immediately after closing, tripping after reset button is not prominent, the screen does not change color (or no reset button or screen)



There are many reasons that trigger the equipment to the trip, and only by finding the root cause can we give targeted solutions.



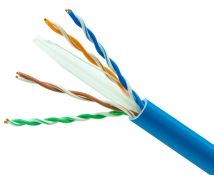
This technical article deals with transformer failure incidents due to nuisance tripping caused by various design flaws, operational conditions, or improper protection relay settings.



One of the most common causes of a circuit breaker tripping off is the DIY mishap. Drilling into walls where cables are hiding can result in short circuits, damaged wiring and circuit breakers that trip.



Be sure that the power distribution box has sufficient power provided to it. Long cable runs can result in a voltage drop, which can be solved by using a heavy gauge wire. Check wires/DIN terminal clasps ...



Frequent tripping of the power distribution box is one of the most common issues in LED display systems, especially in outdoor and large-scale installations. It not only interrupts normal operation ...

Contact Us

For more information, pricing, or custom solutions, please contact us:

Website: <https://www.indzawo.co.za>

Email: sales@indzawo.co.za

Phone: +27 71 296 8473

Address: 22 Quantum Street, Midrand, 1685, Gauteng, South Africa

This document is for informational purposes only. Specifications subject to change without notice.

