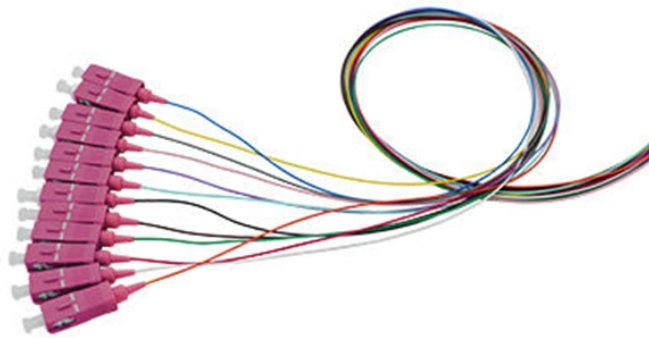


The main switch of the third-level distribution box tripped



Overview

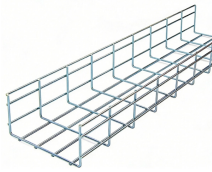
How to Identify: Frequent tripping of the same breaker is a clear indication of overload or short circuit. Check the devices connected to the circuit to see if they are drawing too much current. The answer is that there is an electrical fault with your wiring system. Overheating of Circuit Breakers One of the most common issues with 3 Phase Electrical Distribution Boxes is the overheating of. Before you panic, the solution might be as simple as resetting a tripped MCB in your DB box. The remaining switch is our MAIN SWITCH.



The main switch of the third-level distribution box tripped



Tired of dealing with a switch that keeps tripping and wants to know how to fix it before it leads to a bigger electrical issue? Here are a few ways that you can follow to resolve some of the ...



Breaker keeps tripping? Learn the most common causes, safe fixes, and when to call a licensed electrician in Denver. Prevent fires and electrical damage.



Distribution boxes are the unsung heroes of our electrical systems, quietly managing power until something goes wrong. When they start tripping, overheating, or making strange noises, it's more ...



In this article we talk about what to do when an RCD or Main Switch RCD is tripping and how to solve the problem. If the article doesn't help then you will need an electrician to come and assist.



Knowing the common causes of tripped RCCBs allows us to take proactive steps to prevent potential hazards. In this article, we explore the various factors that can trigger an RCCB ...



If your 3 Phase Distribution Box keeps tripping, it's a sign of a larger underlying issue, such as overloading or short circuits. Frequent tripping can lead to downtime, especially in critical ...



Uncover the top reasons why your circuit breaker keeps tripping. Learn how to troubleshoot, fix and prevent it.



This noise is when the switch is dealing with a large electrical fault current, the noise it makes is the switch dissipating the energy inside itself and turning the supply off.



If your 3 Phase Distribution Box keeps tripping, it's a sign of a larger underlying issue, such as overloading or short circuits. Frequent tripping can lead to downtime, especially in critical ...



Learn how to safely reset a tripped MCB in your DB box. Step-by-step guide for Malaysian homeowners with safety tips and when to call an electrician.



Find out why your main switch keeps tripping and how to fix it. Learn about common causes like overloads, ground faults, and short circuits.

Contact Us

For more information, pricing, or custom solutions, please contact us:

Website: <https://www.indzawo.co.za>

Email: sales@indzawo.co.za

Phone: +27 71 296 8473

Address: 22 Quantum Street, Midrand, 1685, Gauteng, South Africa

This document is for informational purposes only. Specifications subject to change without notice.

