

The intelligent remote PDU keeps ringing



The intelligent remote PDU keeps ringing



What intelligent PDU firmware does Intelligent PDU firmware acts as the specialized operating system governing power metering, remote outlet switching, and network communications. It processes real ...



Get tips on how to troubleshoot your intelligent PDU. Learn what common issues may arise and the best practices for maintaining and optimising your intelligent PDU performance.



Close-up of a tech manager browsing a buyer's guide on a laptop with rack gear behind. At BW Solution Tech, we've spoken to hundreds of IT managers, facilities engineers, and ...



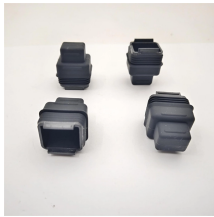
PDUs last for many years, and with the IMD design, businesses are able to upgrade their PDUs to newer monitoring technologies in the future without having to replace the entire rPDU. The hot ...



Throughout this handbook, the content will stay focused on rack PDUs—the PDU that sits at the end of the power chain that supplies power directly to IT equipment in a rack.



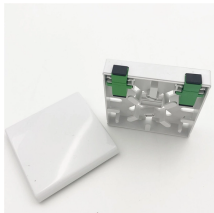
To set up RNA mode on two PDUs, the user must (1) configure the PDUs for RNA Mode (using CLI) and then (2) connect the LAN Network cords and Ethernet cords between PDUs.



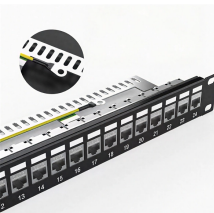
The physical ethernet connections in the daisy-chain can remain the same; however, if previously connected in a looped configuration, the final PDU in the chain should be disconnected from the ...



This dual-connection model allows remote teams to manage PDUs in real time, from updating configurations and firmware, to cycling device power - all without visiting the site.



This manual mainly introduces how to conduct software management and operation of PDU. As for the opening of the equipment and the connection, see PDU INSTALLATION MANUAL (downloaded from ...



To achieve synchronization, make sure the PDU/ATS has established communication with PowerPanel® Business Remote software. See System Tab > Security > Authentication.



Locking outlets, if available, on the Legrand PDU help secure the connection of power cords from your IT equipment to the PDU. A locking outlet has a button on it.

Contact Us

For more information, pricing, or custom solutions, please contact us:

Website: <https://www.indzawo.co.za>

Email: sales@indzawo.co.za

Phone: +27 71 296 8473

Address: 22 Quantum Street, Midrand, 1685, Gauteng, South Africa

This document is for informational purposes only. Specifications subject to change without notice.

