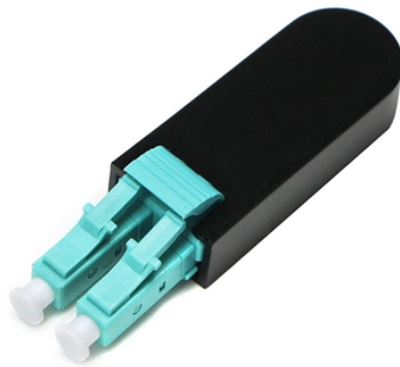


## The distribution box is a control box



### Overview

A control box is an enclosure that houses components used to start, stop, regulate, and monitor machinery or processes. Unlike distribution boxes that mainly handle power division, control boxes govern how electrical power is used. Located near machinery, they provide centralized control for starting, stopping, adjusting, and monitoring. Typical components, such as switches, buttons, and indicator lights, enable easy operation and display. The distribution box (DB box) helps safely and efficiently distribute electrical power. The structure is relatively simple, and it is mostly used for terminal power distribution.

## The distribution box is a control box



Summary: Control boxes and cabinets handle equipment control and monitoring, while distribution cabinets and boxes focus on power distribution and protection, differing in size, function, ...



Simply put, the box for distributing electrical energy is called a distribution box. Mainly used for controlling and distributing electrical equipment, providing protection against overload, short ...



Learn what a distribution box is, its types, and how to choose the right one for your project. Includes clear examples and expert tips.



Summary: Control boxes and cabinets handle equipment control and monitoring, while distribution cabinets and boxes focus on power distribution and ...



What is a Distribution Box? A distribution box, or DB box, is a circuit breaker enclosure. It is a vital part and central hub of any electrical system. The hub distributes electrical power from a ...



Simply put, the box for distributing electrical energy is called a distribution box. Mainly used for controlling and distributing electrical equipment, ...



Just as a heart receives blood and pumps it to various parts of the body, the distribution box receives the main electrical supply and safely distributes it to different circuits throughout your ...



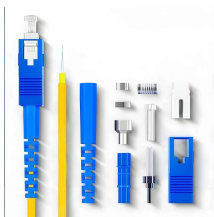
Understand the difference between an industrial distribution box and a control cabinet. Learn their functions, components, applications, wiring structures, common issues, and engineering ...



While distribution boxes, control boxes, and junction boxes may appear similar, their roles within electrical systems are entirely different. Distribution boxes ensure safe and efficient power ...



The distribution box is mainly used for the control and distribution of electrical equipment, and for the protection of overload, short circuit and leakage of lines.



A Distribution Box, commonly known as a DB Box, serves as the central point for safely distributing electrical power from a main supply to multiple downstream circuits.



What is the distribution box? A distribution box, also known as a distribution panel or board, is a cabinet that holds electrical parts used to supply power to multiple circuits within a ...

## Contact Us

For more information, pricing, or custom solutions, please contact us:

Website: <https://www.indzawo.co.za>

Email: [sales@indzawo.co.za](mailto:sales@indzawo.co.za)

Phone: +27 71 296 8473

Address: 22 Quantum Street, Midrand, 1685, Gauteng, South Africa

This document is for informational purposes only. Specifications subject to change without notice.

