

The beam splitter can split indefinitely



Overview

While most beam splitters have a fixed splitting ratio, variable beam splitters allow for the continuous adjustment of the ratio between reflected and transmitted power. It is a crucial part of many optical experimental and measurement systems, such as interferometers, also finding widespread application in fibre optic telecommunications. Beamsplitters are often classified according to their construction: cube or plate. □□ For purchasing, use the RP Photonics Buyer's Guide for beam splitters. It provides an expert-curated supplier directory, buyer-focused technical background information, and structured selection criteria to support professional procurement decisions. Their precision and versatility make them indispensable in a variety of scientific, industrial, and technological applications.

The beam splitter can split indefinitely



When we aim a single photon at such a beam-splitter using one of the input ports, we notice that the photon doesn't split in two: we can place photo-detectors wherever we like in the apparatus, fire in a ...



Explore the precision, applications, and design principles of beam splitters, essential for advancements in scientific research and technology.



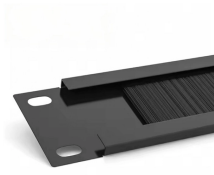
Splitters can split images two, three or even four times based on wavelengths, allowing researchers to image multiple fluorophores simultaneously rather than having to switch channels manually or ...



A beam splitter or beamsplitter is an optical device that splits a beam of light into a transmitted and a reflected beam. It is a crucial part of many optical experimental and measurement systems, such as ...



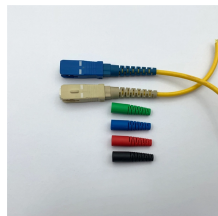
Beamsplitters are optical components used to split incident light at a designated ratio into two separate beams. Additionally, beamsplitters can be used in reverse to combine two different beams into a ...



A beam splitter (or beamsplitter, power splitter) is an optical device which can split an incident light beam (e.g. a laser beam) into two (or sometimes more) beams, which may or may not have the same ...



Beamsplitters are fundamental components in optical engineering, serving to precisely divide a single input beam of light into two distinct output beams. This division allows for the ...



In the context of beam splitters, attenuation can occur due to several factors, including absorption, reflection, and scattering. When a beam splitter divides the incoming light, some of the ...



A beam splitter or beamsplitter is an optical device that splits a beam of light into a transmitted and a reflected beam. It is a crucial part of many optical experimental and measurement ...



A cube beamsplitter is an optical device that divides an incoming light beam into two separate beams. It typically consists of two right-angled prisms cemented together at their ...

Contact Us

For more information, pricing, or custom solutions, please contact us:

Website: <https://www.indzawo.co.za>

Email: sales@indzawo.co.za

Phone: +27 71 296 8473

Address: 22 Quantum Street, Midrand, 1685, Gauteng, South Africa

This document is for informational purposes only. Specifications subject to change without notice.

