

Ten Major Safety Hazards in Relay Protection



Ten Major Safety Hazards in Relay Protection



Use that exceeds the specification ranges such as the coil rating, contact rating and switching life should be absolutely avoided. Doing so may lead to abnormal heating, smoke, and fire. Never touch live ...



Motor Differential Protection Relay: Motor protection relays detect faults within motors by comparing the current entering and leaving the motor windings. They protect motors from issues like phase ...



The norms of protection of generators, transformers, lines and capacitor banks are also given. The procedures of testing switchgear, instrument transformers and relays are explained in detail.



In this blog, we will discuss ten essential rules for electrical safety, including the hazards associated with electrical systems and the control measures that can be taken to prevent accidents.



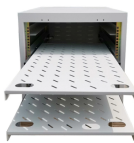
Find out how to identify electrical safety hazards, electrical safety tips, and free resources to protect workers from electrical hazards.



Observe the following precautions to ensure safety. Do not touch the terminal section (charged section) of the Relay or Socket while power is being supplied. Electric shock may occur. Never use a Relay ...



Observe the following precautions to ensure safety. Do not touch the terminal section (charged section) of the Relay or Socket while power is being supplied. Electric shock may occur. Never use a Relay ...



If a Relay is used in an atmosphere subject to dust, dust will enter the Relay, become lodged between contacts, and cause the circuit to fail to close. Moreover, if conductive material such as wire clippings ...



This article aims to deeply explore the common fault types of safety relays and their troubleshooting methods, in order to provide practical reference for industrial electrical safety managers.



The document outlines a Job Hazard Analysis (JHA) for Protection Relay Testing, detailing required permits, potential hazards, and necessary personal protective equipment (PPE).



This lesson explains the importance of electrical safety and the possible hazards that exist when working around electricity. It then provides information on equipment use and rules to observe when working ...

Contact Us

For more information, pricing, or custom solutions, please contact us:

Website: <https://www.indzawo.co.za>

Email: sales@indzawo.co.za

Phone: +27 71 296 8473

Address: 22 Quantum Street, Midrand, 1685, Gauteng, South Africa

This document is for informational purposes only. Specifications subject to change without notice.

