

Technical Support for 6-core Optical Cable Terminal Box



Overview

Accommodates splitters and up to 6 SC Duplex adapters or 6 xLC Quad adapters, Max allowance for entry cables max diameter 15mm, 3 cables, Max allowance for exit cables: Up to 24 simplex cables Features Operation conditions: Temperatures: -40°C — 60°C Humidity: 93% at 40°C Air Pressure: 62kPa. Accommodates splitters and up to 6 SC Duplex adapters or 6 xLC Quad adapters, Max allowance for entry cables max diameter 15mm, 3 cables, Max allowance for exit cables: Up to 24 simplex cables Features Operation conditions: Temperatures: -40°C — 60°C Humidity: 93% at 40°C Air Pressure: 62kPa. This Lockable IP65 distribution box is supplied loaded or unloaded and offers the ability to terminate 12 fibers housed in a strong robust ABS enclosure for indoor and outdoor applications. This terminal box terminates up to 12-24 fiber optic cables, offers spaces for splitters and up to 12-24. The HTB8009 6 Ports FTTH Termination Box is a compact, multi-functional distribution enclosure specially designed for final fiber termination at the user end in fiber-to-the-home (FTTH) applications. Built from UV-resistant ABS material, the box combines durability with a sleek form factor, making. Max. Capacity Gcabling is a leading fiber box manufacturer & supplier. Optical

distribution box as the most advanced FTTX network distribution node equipment, provide quick and reliable connection, good protection and management for the FTTX network. Advanced structure design, Small size and reasonable structure. Material: PC+ABS, high strength engineering plastics. You are about to download a machine translated document.

Technical Support for 6-core Optical Cable Terminal Box



To prove you're not a bot, solve this simple math problem. The machine translated document is now available for download.



MEXFOSERV® offers multiple pre-assembled terminal box options for compact fiber management on FTTH installations. It integrates fiber splicing, splitting, distribution, storage in one unit allowing the ...



FBR-11606 Fiber-Optic Distribution Box, 6-Core is a high quality product by Bud Industries used for electronic enclosure applications.



Moisture proof, waterproof, dust-proof, anti-aging. Protection level up to IP65. Supports splicing-only, or integrated splicing and termination(after upgrade). Supports for air blown micro-cable. Installation ...



Shop the 6 Port FTTH Fiber Distribution Box, a compact, IP65-rated wall-mount enclosure for indoor and outdoor deployments. Durable ABS housing, supports 6 SC adapters and splicing. Ideal for final-mile ...



It integrates splicing, optical splitting, and patch management within a single, space-saving unit. The wall mounted fiber enclosure is engineered to facilitate both feeder cable branching and direct end-user ...



We can manufacture and supply a wide range of fiber termination ...



Built from UV-resistant ABS material, the box combines durability with a sleek form factor, making it easy to mount in indoor or outdoor environments. It supports both fusion splicing ...



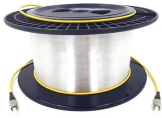
3C-LINK DIN Rail Fiber optic terminal box is available for the distribution and terminal connection for various kinds of optical fiber system, especially suitable for mini-network terminal distribution, in ...



We can manufacture and supply a wide range of fiber termination boxes with 20+ years of experience.



This terminal box terminates up to 12-24 fiber optic cables, offers spaces for splitters and up to 12-24 fusions, allocates 6 x SC Duplex adapters or 6 x LC Quad adapters and working under both indoor ...



Built from UV-resistant ABS material, the box combines durability ...

Contact Us

For more information, pricing, or custom solutions, please contact us:

Website: <https://www.indzawo.co.za>

Email: sales@indzawo.co.za

Phone: +27 71 296 8473

Address: 22 Quantum Street, Midrand, 1685, Gauteng, South Africa

This document is for informational purposes only. Specifications subject to change without notice.

