

## Syrian Bending-Insensitive Fiber Single-Mode



### Overview

Bend-insensitive, single-mode sensor grade fibers, available with 820, 1310, and 1550 nm cutoff wavelengths, feature a high NA of 0.16, making them suitable for tightly wound fiber spools for a variety of sensing applications. When stressed by bending, light in the outer part of the core is no longer guided in the core of the fiber so some is lost, coupled from the core into the cladding, creating a higher loss in the stressed section of the fiber. If you put a. Bend-insensitive single mode fibres (ITU-T G. A2) are a crucial part of the world's shift towards flexible and reliable connectivity. This article, with the loss of optical fiber, mainly describes the current popular structure design of bend-insensitive fiber and the influence of bending on the mechanical strength of fiber and introduces some ap es may lead to the fiber should not be. Written by Ben Hamlitsch, trueCABLE Technical and Product Innovation Manager RCDD, FOI One of the important considerations when looking at optical fiber for installation is bending concerns. This is because fiber optic cable is sensitive to stress, particularly bending. F-SBC Optical Fiber, Singlemode, 1310/1550 nm, Bend Insensitive.

## Syrian Bending-Insensitive Fiber Single-Mode



In addition, as shown in figure 6, total internal reflection PCF has the same excellent bending resistance due to its cladding structure (periodic arrangement of cladding air holes) similar to that of hole ...



Draka BendBright-XS fiber combines two attractive features: excellent low macro-bending sensitivity and low water peak level. Together they allow unlimited use of the whole telecom wavelength window for ...



Single-Mode Bend Insensitive Radiation Hardened Fibers tive and withstand extreme pulsed and continuous ionizing radiation. They have high proof strength, large Weibull modulus, and superior ...



Bend-insensitive single mode fibres (ITU-T G.657.A1 and G.657.A2) are a crucial part of the world's shift towards flexible and reliable connectivity. They are the only fibres capable of securing the whole fibre ...



We have designed a novel bend-insensitive single mode fiber, and characteristics including the mode field distribution, the effective area and the bending loss are analyzed using a finite ...



Let's examine the design of bend-insensitive multimode fiber (which we will usually call by its acronym BI MMF) that shows the technique. In regular graded index multimode fiber, there are many modes (or ...



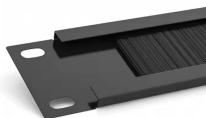
ClearCurve bend-insensitive fibers are compliant with ITU-T Recommendations G.652.D and G.657, providing superior installation speed and efficiency, and greater successful installations in homes and ...



ClearCurve bend-insensitive fibers are compliant with ITU-T Recommendations G.652.D and G.657, providing superior installation speed and efficiency, and ...



Bend-insensitive, single-mode sensor grade fibers, available with 820, 1310, and 1550 nm cutoff wavelengths, feature a high NA of 0.16, making them suitable for tightly wound fiber spools for a ...



This 80  $\mu$ m Reduced-Diameter fiber is a Bend-Insensitive Single-Mode fully compatible with standard single-mode fibers for ease of splicing and low splice loss.



Discover the benefits of bend-insensitive fiber for reducing stress and bending loss in optical fiber. Learn about its design, applications, and compatibility with conventional fiber cable.

## Contact Us

For more information, pricing, or custom solutions, please contact us:

Website: <https://www.indzawo.co.za>

Email: [sales@indzawo.co.za](mailto:sales@indzawo.co.za)

Phone: +27 71 296 8473

Address: 22 Quantum Street, Midrand, 1685, Gauteng, South Africa

This document is for informational purposes only. Specifications subject to change without notice.

