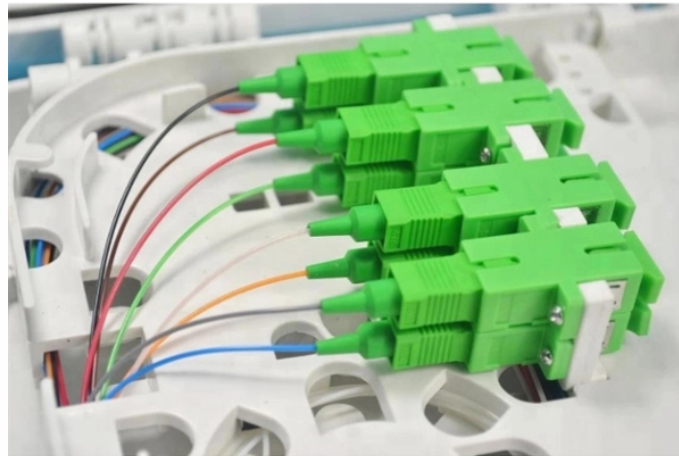


## Switch aggregation port cable



### Overview

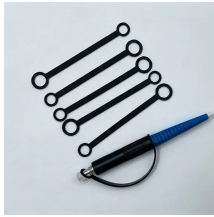
This guide covers what port aggregation / link aggregation (LAG) is and how to enable and use it within UniFi. It does this by splitting traffic across multiple ports instead of forcing clients to use a single uplink port on a switch. Link aggregation increases total bandwidth beyond what a single connection could sustain, and provides redundancy where all but one of the physical links. An Aggregation or "Top-of-Rack" switch is designed to connect everything in a rack at high speeds, then have an even bigger pipe out to the rest of the network. It increases bandwidth in homes and data centers.



## Switch aggregation port cable



It combines multiple ports into one link to boost speed and cut downtime. It's also known as ethernet aggregation or switch aggregation. What is link aggregation is the same idea. It ...



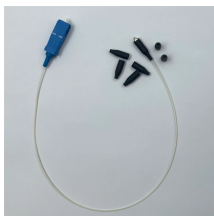
Link aggregation offers an inexpensive way to set up a high-capacity backbone network that transfers multiple times more data than any single port or device can deliver.



Configuring port aggregation on a UniFi switch is straightforward using the UniFi Network Controller (or UniFi OS Console). The process involves selecting the ports you wish to combine, ...



Search Newegg for switch port aggregation. Get fast shipping and top-rated customer service.



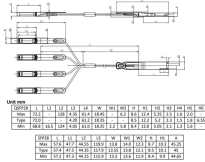
Developed for long distance fiber installations. Equipped with eight SFP+ ports, two additional SFP28 ports and one RJ45 console port for configuration. With AXIS D8308 Fiber Aggregation Switch you ...



Port aggregation is useful for implementing load balancing and provides a redundant link backup. To allow port aggregation, the basic configuration on all the ports must be consistent. The following list ...



Overview Usage Motivation Architecture IEEE link aggregation Proprietary link aggregation Support Linux drivers



An Aggregation or "Top-of-Rack" switch is designed to connect everything in a rack at high speeds, then have an even bigger pipe out to the rest of the network. The Pro Aggregation does this with it's ...



High-performance 10G SFP modules for optimal connectivity. An 8-port, Layer 2 switch made for 10G SFP+ connections.



What cable should I consider for gateway-to-aggregation switch connections? For maximum throughput in gateway-to-aggregation switch connections, it is recommended to use SFP+.

## Contact Us

For more information, pricing, or custom solutions, please contact us:

Website: <https://www.indzawo.co.za>

Email: [sales@indzawo.co.za](mailto:sales@indzawo.co.za)

Phone: +27 71 296 8473

Address: 22 Quantum Street, Midrand, 1685, Gauteng, South Africa

This document is for informational purposes only. Specifications subject to change without notice.

