

## Switch Distribution Box Frame



## Switch Distribution Box Frame



Frames supplied with adjustable guard rails, ground bar, and guide loops. Customer should specify "IDF" verticals when using terminal blocks on vertical and horizontal sides of frame.



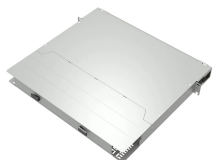
Explore optical distribution frames (ODF) with efficient distributed chassis solutions at CommScope



Belden's XHS Series of Networking and Switch Cabinets is designed to support high load capacities and proper airflow management. The cabinets offer a modular and scalable system that adapts to ...



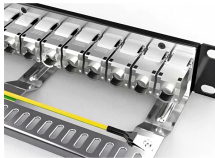
With in-house fabrication and panel shop capabilities plus extensive component inventory, we are a one-stop provider for switchrack frames, enclosures, and ...



Killark Custom Switchracks provide overcurrent and short circuit protection of service entrance, feeder or branch circuits, lighting, heating, appliance and motor circuits. Rated for indoor and outdoor ...



DB has a unique feature of the frame integrated into the Box. 1. The maintenance friendly design consist of simple 3 parts modular construction. 2. This aids in decreasing the number of subassemblies and ...



We offer a wide range of 1-24 core FDB boxes and ODF cabinets for indoor/outdoor FTTX deployment. Durable, IP65 rated, and easy to install. Browse our models and get a wholesale quote.



User-friendly features such as single-jumper length, in-bay jumper storage, transparent modules, and multiple interbay routing options make this frame an ideal solution for both FTTx deployments and ...



Q: What is the difference between a switch and distribution frame? A: distribution frame are used to terminate and manage cables to ensure that different network devices are connected in ...



The various kinds of distribution boxes, includes circuit breaker panel, lighting control panel, main distribution frame, junction box, and power distribution unit.



ZDINS25 Expansion Tier with UPS for 2 industrial switches. Includes a 4RU DIN rail mount bracket, 48-port patch panel, UPS, power supplies AC to DC, terminal blocks, and wiring for 120 V AC input.

## Contact Us

For more information, pricing, or custom solutions, please contact us:

Website: <https://www.indzawo.co.za>

Email: [sales@indzawo.co.za](mailto:sales@indzawo.co.za)

Phone: +27 71 296 8473

Address: 22 Quantum Street, Midrand, 1685, Gauteng, South Africa

This document is for informational purposes only. Specifications subject to change without notice.

