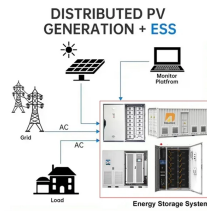


Switch Configuration of Secondary Distribution Box



Switch Configuration of Secondary Distribution Box



The float carries one mercury switch and the vane also carries another mercury switch. Normally, the casing is filled with oil and the mercury switches are open.



Secondary fault capability is increased by paralleled transformers and the feeder breakers must be selected accordingly. Primary switches are usually selector or duplex type so that ...



This example demonstrates a network using HSR and HSRP to provide uplink next-hop gateway redundancy out of the HSR ring, with configuration steps for both Active and Standby ...



This configuration connects two or more transformers (fed from at least two feeders) in parallel to energize the secondary bus. To prevent reverse power flow through the transformers, ...



Location and size of pull boxes and the service entrance enclosure, and the position of incoming and outgoing service ducts at each pull box, in both plan view and profile.



To configure switchgear with more than 5 modules, the required number of tanks can be joined together by use of an external busbar. Alternatively, the complete switchgear can be configured fully modular ...



Unit substation assemblies shall be configured as single-ended or double-ended and consisting of primary sections, transformer sections, and secondary voltage distribution sections.



Typical equipment for this system arrangement is a single unit substation consisting of a fused primary switch, a transformer of sufficient size to supply the loads, and a low-voltage switchboard. This ...



Master the safest and most efficient circuit breaker wiring configurations. Learn about single-phase vs. three-phase setups, safety standards, and future-proof electrical planning.



The modular switchgear design enables a variable configuration of functions – both within a panel block and also with more complex switchgear layouts. All of the individual panels and panel blocks can be ...

Contact Us

For more information, pricing, or custom solutions, please contact us:

Website: <https://www.indzawo.co.za>

Email: sales@indzawo.co.za

Phone: +27 71 296 8473

Address: 22 Quantum Street, Midrand, 1685, Gauteng, South Africa

This document is for informational purposes only. Specifications subject to change without notice.

