

Swiss Wall-Mounted Patch Box 2-Core



Swiss Wall-Mounted Patch Box 2-Core



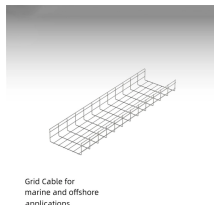
It is used as a termination point for the drop cable to connect with patch cable in FTTH indoor application. It integrates fiber splicing, termination, storage and cable connection in one solid ...



The metal fiber optic wall enclosure consists of two separate parts (each with a different locking mechanism) and is used for the termination and connection of optical fibers in data and ...



Small fibre termination box ideal for areas where it is not suitable to terminate into a 19" rack mounted panel. They can be mounted under desks, floors or anywhere that space is at a premium. Fixing ...



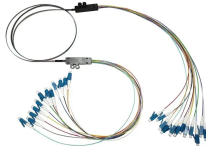
Fiber optic wall-mounted termination boxes are designed for small-scale communication systems, offering a compact and practical structure. Typically, these boxes consist of two sections: one for ...



SS-2Cores-122 2 cores fiber patch panel can hold up to 1 subscriber. It is used as a termination point for the drop cable to connect with patch cable in FTTH indoor application. It integrates fiber splicing, ...



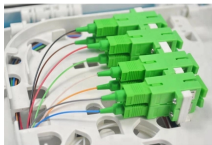
This 2 port wall mount fiber termination box is a professional enclosure designed to terminate and protect optical fibers in FTTH networks. It typically serves as an indoor termination point, connecting ...



It is used as a termination point for the drop cable to connect with patch cable in FTTH indoor application. It integrates fiber splicing, termination, storage and ...



This 2 port wall mount fiber termination box is a professional enclosure designed ...



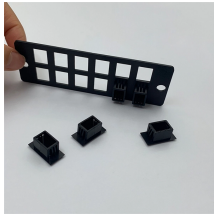
Manufactured from 1.5mm mild steel, the enclosure features an interchangeable internal panel which is available for a wide range of adaptor types. Cable entry ...



No more tangled cables in your network rack thanks to the PATCHBOX cabling system with retractable patch cables and fiber optic cables.



Manufactured from 1.5mm mild steel, the enclosure features an interchangeable internal panel which is available for a wide range of adaptor types. Cable entry and patchcord exit is from the top or the ...



Easy to Use & Prevents Unauthorized Access: Has an integrated slack and patch cord management and a lockable main compartment that controls tampering



During this free webinar, we will discuss different fiber cables types, appropriate applications for each type, the mechanics of performing a Tier I test on fiber optic cable and calculating a loss limit for ...

Contact Us

For more information, pricing, or custom solutions, please contact us:

Website: <https://www.indzawo.co.za>

Email: sales@indzawo.co.za

Phone: +27 71 296 8473

Address: 22 Quantum Street, Midrand, 1685, Gauteng, South Africa

This document is for informational purposes only. Specifications subject to change without notice.

