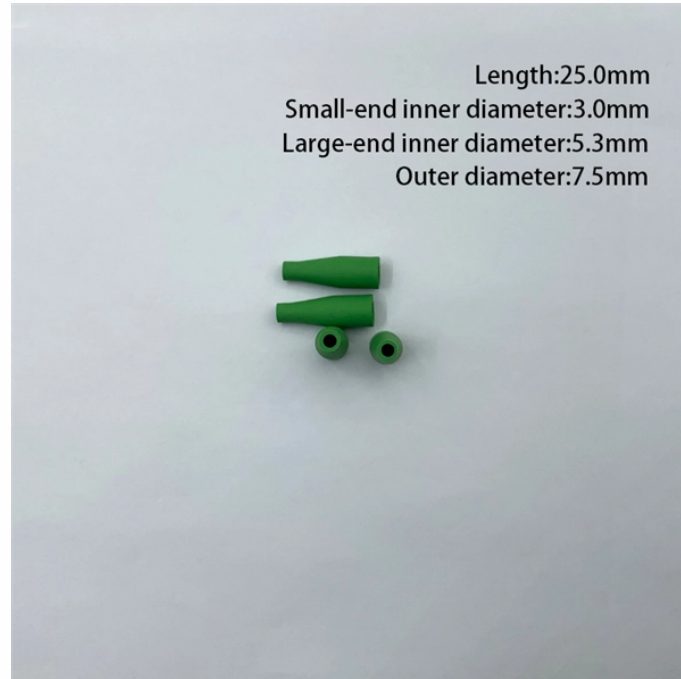


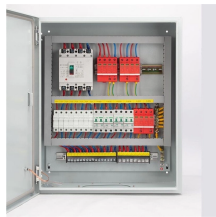
Structure of Construction Site Electrical Distribution Box



Structure of Construction Site Electrical Distribution Box



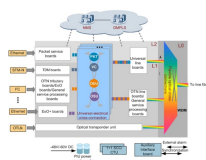
Structure refers to the arrangement of and relations between the parts or elements of something complex. It can also denote a system or organization established for a certain purpose.



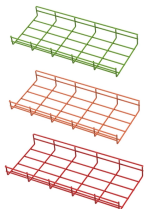
STRUCTURE meaning: 1. the way in which the parts of a system or object are arranged or organized, or a system arranged.... Learn more.



Children need a lot of structure in their lives. She structured the essay chronologically. The story is structured [= built] around several main themes.



Design of Electrical Distribution Panel - Free download as PDF File (.pdf), Text File (.txt) or read online for free. This document outlines the design and functionality of electrical distribution panels, detailing ...



the way or manner in which something is constructed: the structure of the building. the manner in which the elements or parts of anything are organized: the structure of proteins.



This article discusses the construction of the distribution box, its functional divisions, and selection tips. This article can help you better understand the internal structure of the distribution box, ...



We recommend to install these distribution boards in civil building sites, market areas, outdoor events, festivals and temporary electrical distribution. ENERGYBOX is a complete range of Assemblies for ...



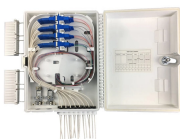
A structure is an arrangement and organization of interrelated elements in a material object or system, or the object or system so organized. Physical structures include artifacts and objects such as ...



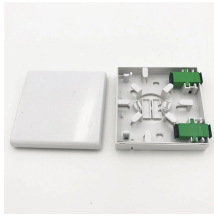
The power distribution system of the construction site is classified into three levels, and the main distribution board (or distribution room) is set. The switch box is set below the main distribution ...



If you structure something, you arrange it in a careful, organized pattern or system. By structuring the course this way, we produce something companies think is valuable. [VERB noun]



A structure is something of many parts that is put together. A structure can be a skyscraper, an outhouse, your body, or a sentence. Structure is from the Latin word structura which means "a fitting ...



The detailed site plans should be used to show all equipment wiring and general lighting. The overall site plan should be used to highlight the locations of switchgear, MCCs, transformers, and the duct bank ...



In this article, we'll break down what a distribution board is, what components it includes, how to choose the right one, and why it matters for the safety and efficiency of any construction site.



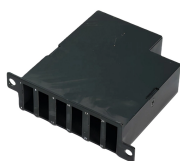
Whether you are an electrical contractor or a construction brigade, knowing how to properly and safely install distribution boxes is the basis of ...



The meaning of STRUCTURE is the action of building : construction. How to use structure in a sentence.



4.3. All 120-volt, single-phase, 15- and 20-ampere receptacles which are not a part of the permanent wiring of the building or structure, 120-volt flexible cord sets, and 120-volt cord- and plug-connected ...



This article explains how temporary construction power boxes work, the key components involved, and how E-abel portable electrical enclosures combined with industrial connector systems ...



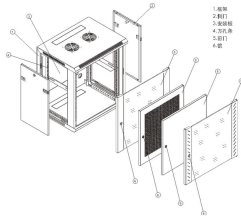
Learn about the internal structure of a distribution box, its components, functions, and key types. Understand its role in electrical systems and safety. A distribution box is a key part of ...



The arrangement or interrelation of all the parts of a whole; manner of organization or construction. The structure of the atom, the structure of society.



There are 17 meanings listed in OED's entry for the noun structure, two of which are labelled obsolete. See "Meaning & use" for definitions, usage, and quotation evidence.



This Section outlines the requirements for Site Electrical Distribution at the Los Alamos National Laboratory that were applicable at the time of publication. LANL recognizes that the state of the art in ...

Contact Us

For more information, pricing, or custom solutions, please contact us:

Website: <https://www.indzawo.co.za>

Email: sales@indzawo.co.za

Phone: +27 71 296 8473

Address: 22 Quantum Street, Midrand, 1685, Gauteng, South Africa

This document is for informational purposes only. Specifications subject to change without notice.

