

Steel cable tray 1000mm deep custom-made



Steel cable tray 1000mm deep custom-made



Cut, bend, and connect the wire mesh trays to route cable and hose in configurations such as curves, slopes, and tees. They are a lightweight option for organizing bundles of cable and hose while ...



It is a process in which zinc is in a liquid state and undergoes complex physical and chemical reactions, resulting in the deposition of a thick layer of pure zinc on steel and the formation of a zinc iron alloy ...



Steel, alloy of iron and carbon in which the carbon content ranges up to 2 percent (with a higher carbon content, the material is defined as cast iron). By far the most widely used material for ...



Learn how to read a steel gauge chart, compare steel thicknesses, and choose the right gauge for your project with clear explanations and conversions.



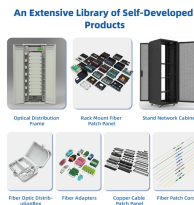
SFSP manufactures a wide range of products capable of providing the characteristics which respond to the proposed application, along with quality of assembly, speed of installation, and cost-saving cable ...



Stocking over 50,000 Shapes, Sizes, Types and Lengths of Steel, Aluminum, Stainless, Brass, Copper, Cold Finish Steel, Tool Steel and Alloy Steels among our network of warehouses, at Wholesale Prices.



Perforated straight electrical cable tray, without bend, 50mm height, 1000mm width, Allows easy access to cables for easy maintenance and repair, manufactured by Habbal Alarabi factory (HEMCO).



In the realm of electrical equipment and supplies, 1000mm cable tray play a crucial role in ensuring organized and efficient cable management. These structures, typically made from materials such as ...



Straight perforated electrical cable tray by Habbal Alarabi Factory featuring omega flange design, 100mm height, and 1000mm width. Constructed from zinc plated steel for durability and corrosion ...



Steel is a metallic alloy of iron and carbon used in a wide variety of applications. Learn more about it here.



The meaning of STEEL is commercial iron that contains carbon in any amount up to about 1.7 percent as an essential alloying constituent, is malleable when under suitable conditions, and is distinguished ...



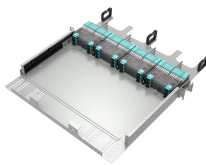
Do you have the best type of steel for your project? Use our chart to help & learn more about the various steel grades, their applications, & ASTM standards.



Your ultimate steel guide! Explore types, properties, uses, and selection tips. Master steel for construction, manufacturing, and more!



Steel is the world's most important engineering and construction material. It is used in every aspect of our lives; in cars and construction products, refrigerators and washing machines, cargo ships and ...



Made of steel, aluminum or FRP plastic material, steel pallets can be galvanized or sprayed to improve corrosion resistance. The trapezoidal cable tray is strong in structure and is usually able to carry ...



Parco provides perforated cable trays & GI perforated cable trays (50-1000mm) with a min. 86-micron HDG coating. ISO & UAF-certified for electrical cable management in commercial, industrial & ...



Cable Tray SPCT 100/100SS304 Perforated Cable Tray System expertly constructed from high-grade stainless steel, offering exceptional durability and resistance to corrosion.



Madsen Steel Wire manufactures custom, welded steel cable trays for use in many industrial and commercial settings. Our capabilities also include sheet metal and tube fabrication, wire forming and ...

Contact Us

For more information, pricing, or custom solutions, please contact us:

Website: <https://www.indzawo.co.za>

Email: sales@indzawo.co.za

Phone: +27 71 296 8473

Address: 22 Quantum Street, Midrand, 1685, Gauteng, South Africa

This document is for informational purposes only. Specifications subject to change without notice.

