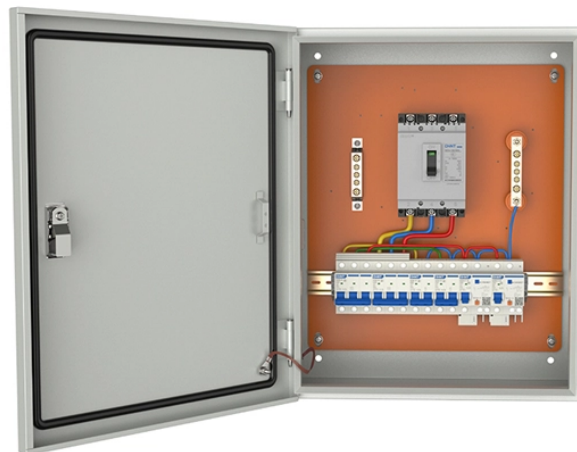


# Standard distribution box voltage



## Overview

The official Distribution Voltage standard for single phase is 120 and 240V, for 3 phase it is 208, 240, 480 and 600. Basic household voltage in the US is 120V/240V, whereas most IEC countries, including the UK, EU, AUS, and NZ, use a simple 230V single phase and 400-415V. distribution voltages are between 4 and 35 kV. In this article, unless otherwise specified, voltages are given as line-to-line voltages; this follows normal industry practice, but it is sometimes a source of confusion. A voltage class is a. There are two "standards" for voltage in North America depending on which END of the wire you are looking at; "Distribution Voltage" (also called "Service Voltage") and "Utilization Voltage", both set forth in ANSI (American National Standards Institute) Standard number C84. 1, backed up by IEEE. The utilization voltage of equipment can be accomplished with various distribution system voltages. Typical considerations include utility connections, rate tariffs, distances to loads, costs and others. But what exactly is a power distribution box, and why is it so essential in our daily lives?

The DB panel board controls the flow of electricity.

## Standard distribution box voltage



It makes sure that electrical equipment, including low voltage distribution boxes, is safe for users and meets market rules. The LVD covers ...



In this article, unless otherwise specified, voltages are given as line-to-line voltages; this follows normal industry practice, but it is sometimes a source of confusion. The four major voltage classes are 5, 15, ...



It makes sure that electrical equipment, including low voltage distribution boxes, is safe for users and meets market rules. The LVD covers equipment with voltages between 50 and 1000 volts ...



In this guide, we'll break down the 12 main types of distribution boxes in a way that's easy to understand. We'll chat about what each one does, where it shines, and then dive into how to choose the perfect ...



The official Distribution Voltage standard for single phase is 120 and 240V, for 3 phase it is 208, 240, 480 and 600.



Choosing the right electrical junction box size is crucial for safety and code compliance in your US projects. This guide helps you determine the correct dimensions based on wire fill capacity, ...



Learn how to install a distribution box safely and correctly. Covers wiring, placement, standards, and expert tips for a compliant setup.



Maintenance and installation costs also increase with increasing service voltage. However, equipment such as large motors may require a service voltage of 4160 V or higher, and, further, service ...



600V AC is a common voltage level used for three-phase power distribution in industrial settings. It is typically supplied by a transformer that steps down the distribution voltage, which is typically 7.2k ...



Understand distribution boxes (DB boxes) in 5 minutes. Learn about types, components, functions, and uses. Find the perfect DB box for your needs.



Explore the essential guide to different voltage ratings. Understand their significance, applications, and how they impact electrical systems effectively.



The most common voltage levels used in distribution networks are 33kV, 22kV, and 11kV for primary distribution and 415V and 230V for secondary distribution. These levels are chosen to ...

## Contact Us

For more information, pricing, or custom solutions, please contact us:

Website: <https://www.indzawo.co.za>

Email: [sales@indzawo.co.za](mailto:sales@indzawo.co.za)

Phone: +27 71 296 8473

Address: 22 Quantum Street, Midrand, 1685, Gauteng, South Africa

This document is for informational purposes only. Specifications subject to change without notice.

