

## Standard diagram of wiring exiting the distribution box



## Standard diagram of wiring exiting the distribution box



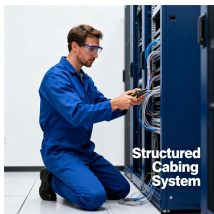
Wiring Direction: Wiring between the main circuit breaker and each branch circuit breaker in the box generally goes on the left, and the wiring out of the distribution box generally goes on the ...



This document provides a list of components in an electrical distribution box with their names and associated wiring diagrams. It includes tables of diodes, fuses, relays, and other components like ...



Hey, in this article we are going to see the Single Phase Distribution Box Wiring Diagram and Connection Procedure. A distribution board or distribution box is where the main power supply is ...



A wiring diagram for distribution boxes typically consists of two parts: a schematic diagram and a legend. The schematic diagram indicates the circuits that connect to each component ...



These diagrams typically show the termination information for all field (interconnecting) wiring between panels and equipment. Several formats are used for interconnection diagrams.



Dual Control/Supply Lighting Distribution Box Use to control 2 groups of luminaires independently of each other (same circuit, separate control) or to control 2 individual circuits of luminaires (2 protective ...



Find out how to properly wire an electrical panel box with a comprehensive diagram and step-by-step instructions.



This document provides a list of components in an electrical ...



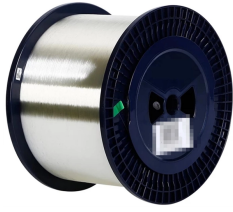
You can see the wiring diagram of single phase distribution box from main meter to DB and other sub-circuit in the below figure. You have to connect ...



In this video, we'll walk you through the process of wiring a home distribution box with a detailed connection diagram. Whether you're an electrician or a DIY enthusiast, this guide will help you ...



In this video, we'll walk you through the process of wiring a home distribution box with a detailed connection diagram.



Learn how to install a distribution box safely and correctly. Covers wiring, placement, standards, and expert tips for a compliant setup.

## Contact Us

For more information, pricing, or custom solutions, please contact us:

Website: <https://www.indzawo.co.za>

Email: [sales@indzawo.co.za](mailto:sales@indzawo.co.za)

Phone: +27 71 296 8473

Address: 22 Quantum Street, Midrand, 1685, Gauteng, South Africa

This document is for informational purposes only. Specifications subject to change without notice.

