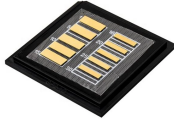


Standard Requirements for Resistance of Distribution Box Circuits



Standard Requirements for Resistance of Distribution Box Circuits



The normal duty and heavy duty suspension, light duty, normal duty and heavy duty tension insulator sets shall all comply with the technical requirements and satisfy the test requirements



This standard establishes uniform methods for testing electronic and electrical component parts, including basic environmental tests to determine resistance to deleterious effects of natural elements ...



By reference to Table 61 of BS 7671, Regulation 612.3.2 indicates that the minimum acceptable value of insulation resistance for a distribution circuit with a distribution board or consumer unit and all its final ...



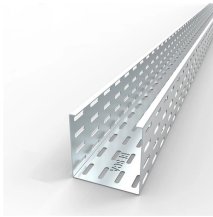
ArTu K provides the maximum level of safety with Internal Arc Test certification following the highest criteria defined by the latest IEC TR 61641 International Standard.



A switch or circuit breaker shall be provided by which each resistance welder and its control equipment can be disconnected from the supply circuit. The ampere rating of this disconnecting means may not ...



The new standard clearly regulates the responsibility for a distribution board placed on the market. It distinguishes between the original manufacturer (system manufacturer) and the manufacturer of the ...



To address the concerns for personnel safety from arc flash hazards, the 2014 Edition of the NEC as well as the 2015 Edition of NFPA 70E have enhanced the requirements for personnel protection ...



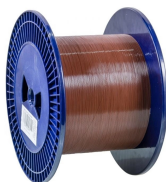
This standard describes the design of individual electrical power circuits for illumination, signal, and ITS equipment, powered from WSDOT electrical service cabinets, and the associated features required ...



Once the branch circuit loads are calculated, the feeder circuit loads may be calculated by applying demand factors to the branch circuit loads, so the points below must be considered when ...



You need to understand the main standards and codes that guide the safe design and use of low voltage distribution boxes. These rules help you meet ...



Determine the resistance of the earth continuity conductors between the earth terminal of the distribution board under test and the earthing terminals of all points of consumption and switches supplied from ...

Contact Us

For more information, pricing, or custom solutions, please contact us:

Website: <https://www.indzawo.co.za>

Email: sales@indzawo.co.za

Phone: +27 71 296 8473

Address: 22 Quantum Street, Midrand, 1685, Gauteng, South Africa

This document is for informational purposes only. Specifications subject to change without notice.

